

REMS Mini-Press S 22V ACC

Cordless radial press 22kN with automatic circuit control

Universal, super handy electric tool with automatic circuit control for producing pipe pressing joints for all common pressfitting systems. Li-Ion 22V Technology. For battery and corded operation.

Pipe pressing joints $\varnothing 10-40 \text{ mm} / \varnothing \frac{3}{8}-1 \frac{1}{4}''$

Complete range of REMS pressing tongs Mini/pressing rings for all common pressfitting systems, see page 144–166.

REMS Mini-Press S 22V ACC – universal up to $\varnothing 40 \text{ mm}$. Super light, super small, super handy, ultra fast. Pressing under 4s. Automatic pressing process. With automatic circuit control. Li-Ion 21.6V, 1.5Ah battery for approx. 250 pressings Viega Profipress DN 15 with one battery charge.

Pressing tongs for all common systems

Complete assortment of REMS pressing tongs Mini/pressing rings for all common pressfitting systems (page 144–166). Can be driven by all REMS radial presses 22 kN. Highly durable pressing tongs/pressing rings made of forged, tenacious, specially hardened special steel. Pressing contours of REMS pressing tongs/pressing rings are system-specific and correspond to the respective pressfitting system. Thus perfect system-conformity, safe press jointing. Adapter tongs required for driving the REMS 45° (PR-2B) pressing rings, see page 166.

Very compact design and low weight of the REMS Mini pressing tongs due to special arrangement of the pressing tongs connection (**Patent EP 1 952 948**). Recesses in the pressing jaws for safe guidance of the connecting plate for offset-free pressing (**Patent EP 2 347 862**).

Design

Super light, super small, super handy. Drive unit with battery only 2.6 kg. Works anywhere, free-hand, overhead, also in particularly tight areas. Optimum weight distribution for single-hand operation. Drive unit with inserted pressing tongs can be put down on the battery ready to pick up. Ergonomically designed housing with soft grip. LED work light for illuminating the work place. Swivelling pressing tongs seat, rotation angle $> 360^\circ$. Secure seating of pressing tongs/adapter tongs by automatic locking.

Pressing operation with ACC

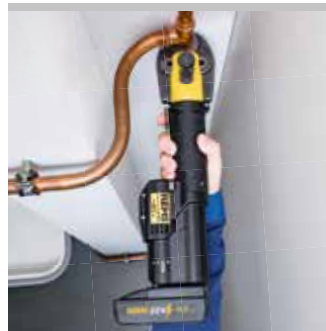
For reliable service, operating and functional safety. Automatic retraction after completion of pressing operation (automatic circuit control). Ultra fast Pressing under 4 s.

Drive

Enormous thrust and pressing force for fast and perfect press jointing. Thrust force 22kN. Powerful electro-hydraulic drive with powerful battery motor 21.6 V, 380 W output, robust planetary gear, eccentric reciprocating pump and compact high power hydraulic system. Safety tip switch.

Battery or mains operation

Li-Ion 22V Technology. Highly resistant Li-Ion 21.6V battery with 1.5, 2.5, 5.0 or 9.0Ah capacity, for long service life. Light and powerful. Li-Ion 21.6V, 1.5Ah batteries for approx. 250 pressings, 2.5Ah for approx. 390 pressings, 5.0Ah for approx. 780 pressings, 9.0Ah for approx. 1400 pressings Viega Profipress DN 15 with one battery charge. Graduated charging state display with coloured LED. Operating temperature range – 10 to + 60 °C. No memory effect for maximum battery power. Rapid charger Li-Ion 100–240 V, 90 W. Rapid charger Li-Ion 100–240 V, 290 W, for shorter charging times, as accessory. 220–240 V/21.6 V, 15A, voltage supply for mains operation instead of Li-Ion battery 21.6 V, as accessory.



German Quality Product



Tested by electrosuisse >>>



Info



Supply format

REMS Mini-Press S 22V ACC Basic-Pack. Cordless radial press 22 kN with automatic circuit control for producing pipe pressing joints Ø 10–40 mm, Ø ¾–1 ¼". For operating with REMS pressing tongs Mini/pressing rings. Swivelling pressing tongs seat with automatic locking. Electro-hydraulic drive with powerful battery motor 21.6 V, 380 W, robust planetary gear, eccentric reciprocating pump and compact high power hydraulic system. Safety tip switch. LED work light. Battery Li-Ion 21.6 V, 1.5 Ah, rapid charger Li-Ion 220–240 V or 110 V, 50–60 Hz, 70 W.

Version	Art.-No.
In sturdy steel case.	578015
In L-Boxx system case.	578016

Other voltages on request.

Accessories

Description	Art.-No.
REMS pressing tongs Mini/pressing rings see page 144–166.	
REMS cropping tongs Mini for threaded rods see page 167.	
REMS Mini-Press S 22V ACC drive unit, without battery	578003
Battery Li-Ion 21.6 V, 1.5 Ah	571570
Battery Li-Ion 21.6 V, 2.5 Ah	571571
Battery Li-Ion 21.6 V, 5.0 Ah	571581
Battery Li-Ion 21.6 V, 9.0 Ah	571583
Rapid charger Li-Ion 100–240 V, 50–60 Hz, 90 W	571585
Rapid charger Li-Ion 100–240 V, 50–60 Hz, 290 W	571587
Voltage supply 220–240 V/21.6 V, 50–60 Hz, 15 A, for mains operation instead of battery Li-Ion 21.6 V.	571567
Steel case with inlay	578290
L-Boxx system case with inserts	578299

