

# Our CUSTOM-MADE RANGE of stainless steel cabinets with Aquablend™ TMV

**Aquablend™** TMV Cabinet Specification Guide is an easy three-step selection process that allows you to choose the most suitable solution for your specific requirements.

Simply choose between our **Aquablend™ 1500** or **Aquablend™ 1000**:



Then, select from the range of pipework and valve configurations based on the specifications in the following table.

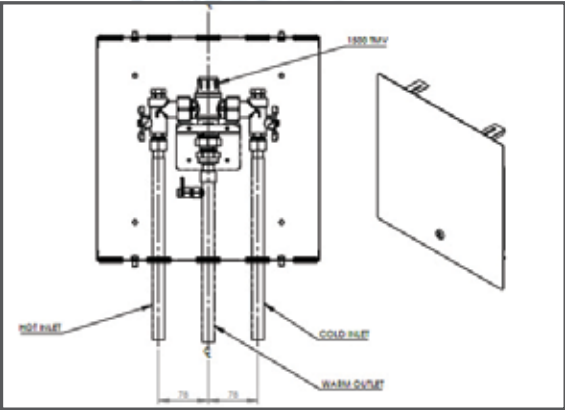
Finally, choose the required lid from the options available.

NOTE: Codes with an \* include a lid.

	AQUABLEND 1500								AQUABLEND 1000																									
	ATMS700VC-350 ATMS710VC-350		ATMS700R-350* ATMS710R-350*		ATMS700VCSF-350 ATMS700SF-350		ATMS700VCPRV-430 ATMS710VCPRV-430		ATMS700PRVSF-430 ATMS719-350 ATMS719-350		ATMS719R-350*		ATMS719SF-350		ATMS719PRV-430 ATMS719PRV-430		ATMS719PRVSF-430 ATMS719RW-350 ATMS719RW-350		ATMS719PRVRW-430 ATMS719PRVRWSF-430		ATMS718-350 ATMS718-350		ATMS718SF-350 ATMS718RW-350 ATMS718RW-350		ATMS718RWSF-350 ATMS7120-350		ATMS750SF-350 ATMS750PRV-430		ATMS750PRVSF-430 ATMS751-350 ATMS751-350		ATMS751SF-350			
350 x 350 CABINET																																		
500 x 430 CABINET																																		
BOTTOM INLET CW																																		
BOTTOM INLET HW																																		
BOTTOM OUTLET WW																																		
BOTTOM OUTLET CW BYPASS																																		
BOTTOM OUTLET HW BYPASS																																		
SMART FLOW ENABLED																																		
STRAIGHT THROUGH CW BYPASS																																		
STRAIGHT THROUGH HW BYPASS																																		
STRAIGHT THROUGH RW BYPASS																																		
COLD WATER PRESSURE REDUCTION VALVE																																		
HOT WATER PRESSURE REDUCTION VALVE																																		
LIDS	350 X 350 HINGED WITH TRIM RECESSED SECURITY RECESSED LID FOR EXPOSED CABINET INSTALLATIONS								ATMSHL-350 +POWDER COATING ATMSRL-350 +POWDER COATING ATMSSEC-350 ATMSXP-350								500 X 430 HINGED WITH TRIM RECESSED								ATMSHL-430 +POWDER COATING ATMSRL-430 +POWDER COATING ATMSRLPC-430									

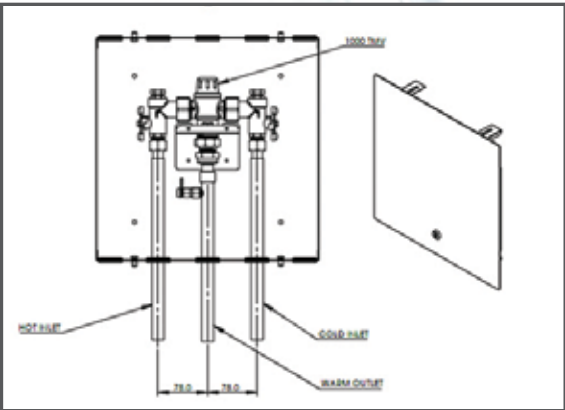
# Our ALL INCLUSIVE RANGE of stainless steel cabinets with Aquablend™ TMV

Simply choose from our complete TMV solutions below:



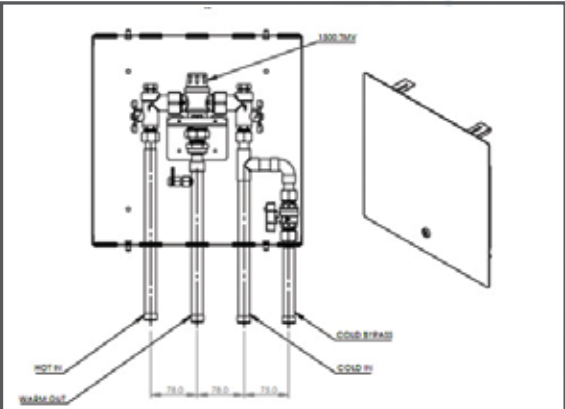
ATMS700R-350

**AQUABLEND™ 1500 LCK S/S CABINET  
RECESSED KIT (IN LOCKABLE SS CABINET  
WITH RECESS LID)**



ATMS710R-350

**AQUABLEND™ 1000 LCK S/S CABINET  
RECESSED KIT (IN LOCKABLE SS CABINET  
WITH RECESS LID)**



ATMS719R-350

**AQUABLEND™ 1500 S/S CABINET  
W/ CW BYPASS REC LID KIT (IN LOCKABLE  
SS CABINET WITH RECESS LID)**



Aquablend™ TMV Cabinet  
Specification Guide

1300 369 273 (AUS) | [www.enware.com.au](http://www.enware.com.au) | [info@enware.com.au](mailto:info@enware.com.au)



## Aquablend™ TMV Cabinet Specification Guide

READY TO INSTALL KIT WITH INLET VALVES,  
STRAINERS, NON-RETURN VALVES, OUTLET  
ADAPTORS AND ADJUSTMENT TOOLS

