

A

B

C

D

1

1

2

2

3

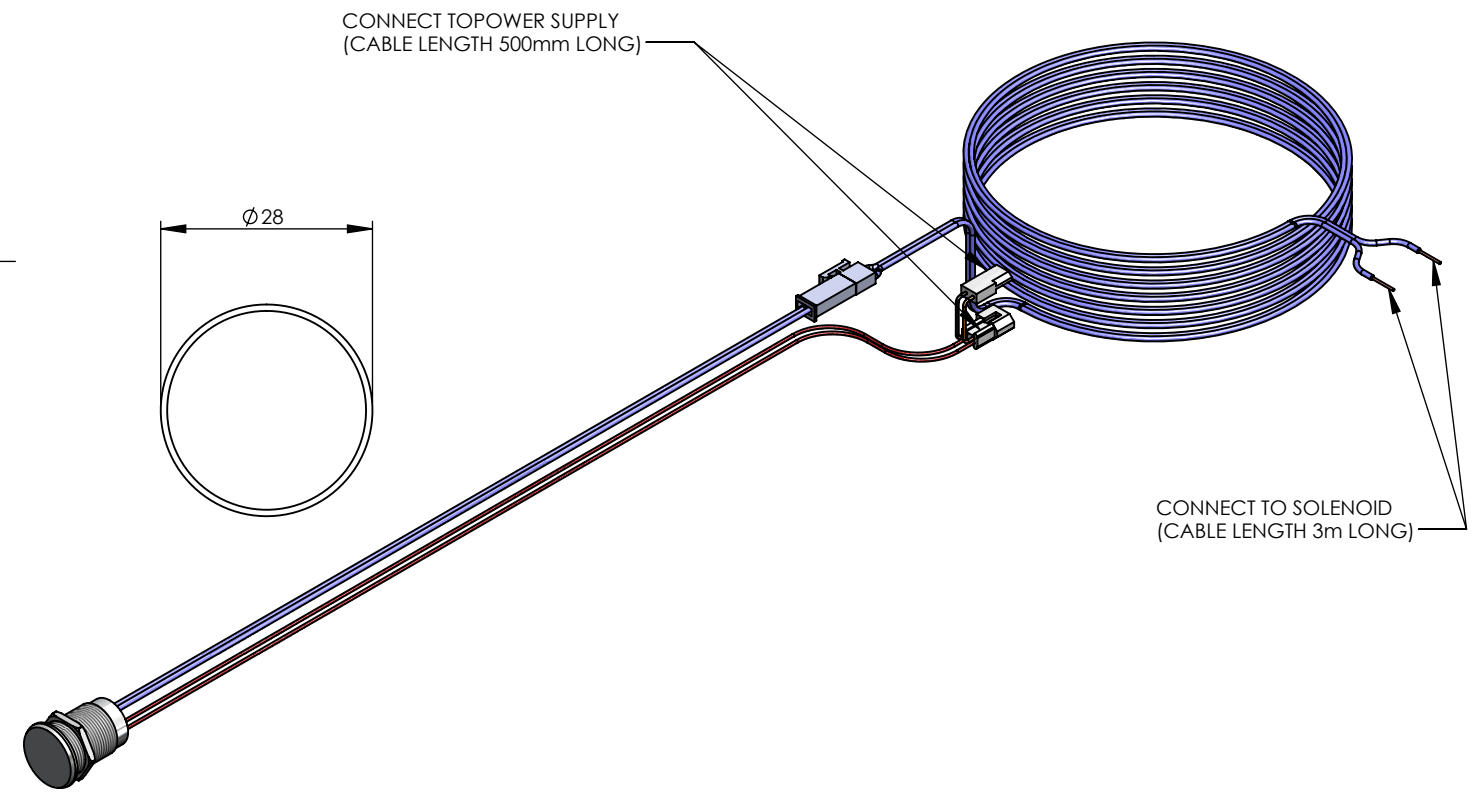
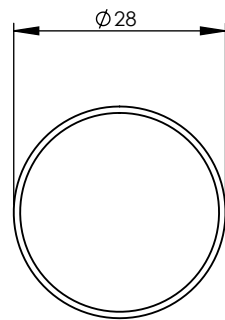
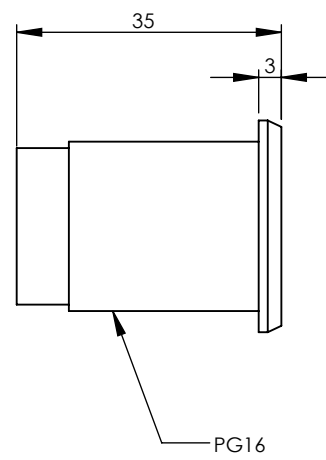
3

4

4

CONNECT TO POWER SUPPLY
(CABLE LENGTH 500mm LONG)

CONNECT TO SOLENOID
(CABLE LENGTH 3m LONG)



NOTE:
FIXED TIMING

GENERAL NOTES:
 - REMOVE ALL BURRS AND SHARP EDGES UNLESS OTHERWISE STATED
 - ALL THREADS TO BE CHAMFERED
 - DIMENSIONS ARE IN mm's
 - DO NOT SCALE OFF DIMENSIONS

TOLERANCE EXCEPT WHERE STATED:
 NO DECIMAL POINT √ 2
 ONE DECIMAL PLACE √ 1
 ANGLES √ 1°

ENWARE RESERVES THE RIGHT TO AMMEND PRODUCT SPECIFICATIONS AND DESIGNS WITHOUT NOTICE

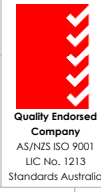
DRAWN	KN
CHECKED	YK
APPROVED	AC



This drawing is the property of Enware Australia Pty Ltd and may not be reproduced in full or part without the written consent of Enware Australia.



9 Endeavour Rd,
Caringbah, NSW, 2229
Ph. 61-2-9525-9511
Fax. 61-2-9524-8421



TITLE
PIEZO HALF FLUSH EMF

DRAWING NUMBER: **EMFS301**

FINISH:

SIZE: A4	SCALE: 1:1	SHEET: 1 OF 2
----------	------------	---------------

REVISION				
REV.	DATE	ECN	DESCRIPTION	MODIFIED BY
A	20/07/11		FIRST ISSUE	

A

B

C

D