



commercial laboratory tapware

MODERN LAB TAPWARE
QUALITY AND PRECISION
WITH A LONGER LIFE



maximised efficiencies for today's laboratories

ENWARE'S COMMERCIAL LABORATORY FITTINGS ARE CREATED FROM MATERIALS OF THE HIGHEST QUALITY WITH PROVEN ENDURANCE; AND ARE DESIGNED TO MEET THE AESTHETIC AND FUNCTIONAL PERFORMANCE REQUIREMENTS OF TODAY'S MOST DEMANDING LABORATORIES.

EXTENSIVE RANGE

Enware's range covers all services including deionised, demineralised pure water, hands-free tapware, back-flow prevention plus the deluge shower and eyewash safety products that are mandatory in any laboratory.

SMART SOLUTIONS

Easy-clean, ComLab designs feature the practical benefits of simple operation, maximum control and proven long, serviceable life.

SOLID & VERSATILE

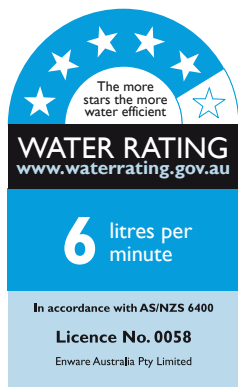
Fittings are ideal for bench, bollard and fume cupboard use in wall, bench and pendant mounted configurations. Additional advantages are solid construction and vandal resistant features which make them also suitable for university laboratories.

FAST & FLEXIBLE

Being an Australian manufacturer, Enware's lead times in providing your choice of materials and finishes are faster and more flexible. Products can be customised to meet specific project requirements.

SAFE & EFFICIENT

Enware's laboratory tapware is WaterMark Licensed to AS/NZS3718 and supplied with a 5 star WELS rating standard with more flow rate options available; Gas fittings are AGA Approved and our Emergency Showers and Eyewash equipment have been independently tested to ANSI Z358.1 and are compliant with AS4775.



QUALITY ASSURANCE



Enware's manufacturing operates under quality assurance accreditation ISO9001



Enware Laboratory Tapware is manufactured to the exacting WaterMark standard AS/NZS3718



Enware safety deluge showers and plumbed emergency eye/face wash equipment has been independently tested for compliance with ANSI Z358.1 - 2009 and is compliant with AS4775 - 2007



Gas Turrets have been subjected to an independent rigorous technical assessment and approval by the Australian Gas Association.

CONTENTS

WATER FITTINGS

04

- BENCH MOUNTED
- PENDANT MOUNTED
- WALL MOUNTED



SPECIALIST WATER FITTINGS

08

- REVERSE OSMOSIS
- STAINLESS STEEL TAPWARE



DRY MEDIA FITTINGS

10

- BENCH MOUNTED
- PENDANT MOUNTED
- WALL MOUNTED



BURNING GAS FITTINGS

12

- BENCH MOUNTED
- PENDANT MOUNTED
- WALL MOUNTED
- LOW PRESSURE GAS FITTINGS



FUME CUPBOARD FITTINGS

15

- FRONT PANEL VALVES
- OUTLET OPTIONS



ADDITIONAL PRODUCT INFORMATION AND OPTIONS

18

- COLOUR CODING AND IDENTIFICATION CHART
- FINISHES
- ISOLATION/SERVICE VALVE
- SPOUT AND OUTLET OPTIONS
- HEADWORKS AND TABLE OF LUBRICANTS
- SPARE PARTS AND OPTIONS



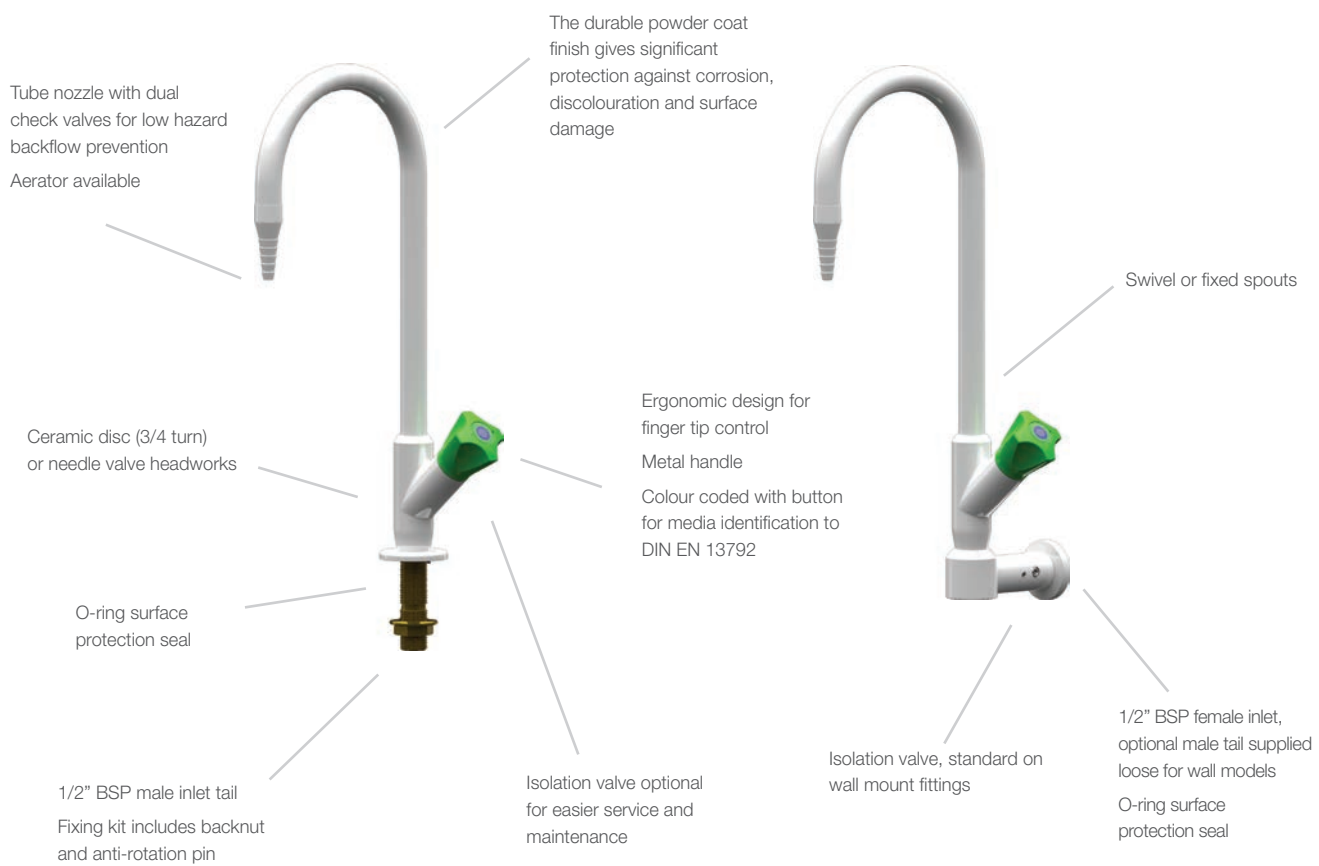
ALSO AVAILABLE

22

- DEDICATED HAND WASH TAPWARE AND BASINS
- FRANKE 316 STAINLESS STEEL SINKS AND BOWLS
- EMERGENCY SAFETY SHOWER AND EYEWASH SYSTEMS



WATER FITTINGS - KEY FEATURES



ENWARE'S COMLAB LABORATORY OUTLETS ARE SUPPLIED WITH A TAPERED TUBE NOZZLE AND ARE ASSEMBLED FOR EACH SPECIFIC MEDIA TYPE.

ComLab handles are ergonomically designed for precise feel and finger tip control. Handles are colour coded for easy service identification and use complementary buttons.

KEY POINTS

- WaterMark approved to AS/NZS 3718
- Specify media when ordering for colour coding and media identification - refer to DIN EN 13792 chart on page 18
- Suits potable water (cold, warm, hot), chilled water. For RO and pure water please refer to the 'Specialist Water Fittings' Section on page 8
- WELS 5 Star (6.0lpm) water efficiency rating supplied standard. For alternative flow rates contact your Enware representative.

TECHNICAL INFORMATION

Connection	1/2" BSP Female (Wall) 1/2" BSP Male
Working Pressure Range - Ceramic Disc	20-700kPa (water) 500kPa Max*
Working Pressure Range - Needle Valve	10-700kPa (water) 500kPa Max*
Maximum Testing Pressure	1000kPa
Working Temperature Range	0-90°C
Outlet Connection	Tube Nozzle 3/8" BSP Female (without nozzle) Other options available
Water Options	Cold, Hot and Chilled Water NOTE: Client to specify media type

*Enware Products are to be installed in accordance with AS/NZS 3500.

WATER FITTINGS

WATER FITTINGS - BENCH MOUNTED

RIGHT ANGLE BENCH MOUNTED LABORATORY TAP

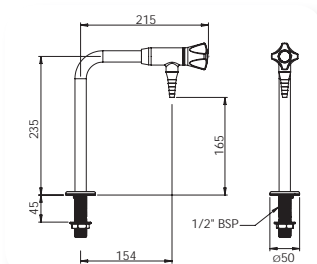
Order Code:

LCN101 - Ceramic Disc

LCN101I - Ceramic Disc with Isolation Valve

LCN101N - Needle Valve

LCN101NI - Needle Valve with Isolation Valve



2 WAY RIGHT ANGLE BENCH MOUNTED LABORATORY TAP

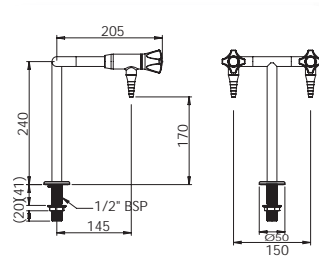
Order Code:

LCN102 - Ceramic Disc

LCN102I - Ceramic Disc with Isolation Valve

LCN102N - Needle Valve

LCN102NI - Needle Valve with Isolation Valve



3 WAY BENCH MOUNTED LABORATORY TAP WITH 2 FIXED AND 1 SWIVEL GOOSENECK OUTLET

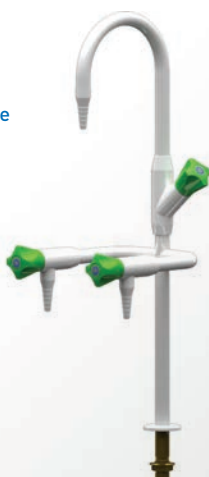
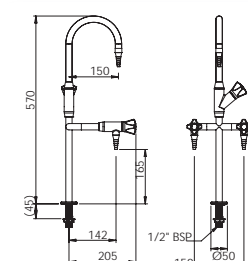
Order Code:

LCN103 - Ceramic Disc

LCN103I - Ceramic Disc with Isolation Valve

LCN103N - Needle Valve

LCN103NI - Needle Valve with Isolation Valve



2 WAY BENCH MOUNTED LABORATORY TAP WITH 1 FIXED AND 1 SWIVEL GOOSENECK OUTLET

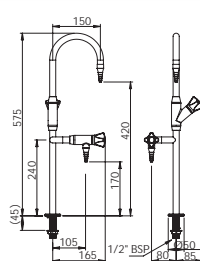
Order Code:

LCN104 - Ceramic Disc

LCN104I - Ceramic Disc with Isolation Valve

LCN104N - Needle Valve

LCN104NI - Needle Valve with Isolation Valve



BENCH MOUNTED LABORATORY TAP WITH FIXED GOOSENECK OUTLET

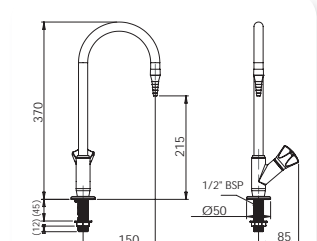
Order Code:

LCN109 - Ceramic Disc

LCN109I - Ceramic Disc with Isolation Valve

LCN109N - Needle Valve

LCN109NI - Needle Valve with Isolation Valve



BENCH MOUNTED LABORATORY TAP WITH SWIVEL GOOSENECK OUTLET

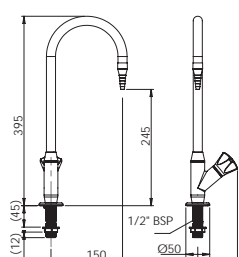
Order Code:

LCN110 - Ceramic Disc

LCN110I - Ceramic Disc with Isolation Valve

LCN110N - Needle Valve

LCN110NI - Needle Valve with Isolation Valve



WATER FITTINGS

WATER FITTINGS - BENCH MOUNTED MIXING SETS

BENCH MOUNTED LABORATORY MIXING SET WITH SWIVEL GOOSENECK OUTLET AND OBLIQUE HANDLES

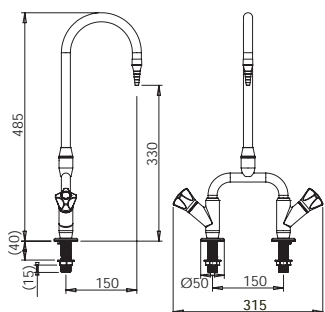
Order Code:

LCN107 - Ceramic Disc

LCN107I - Ceramic Disc with Isolation Valve

LCN107N - Needle Valve

LCN107NI - Needle Valve with Isolation Valve



3 WAY BENCH MOUNTED LABORATORY MIXING SET WITH SWIVEL SPOUT AND 2 FIXED BIB TAPS (H+C)

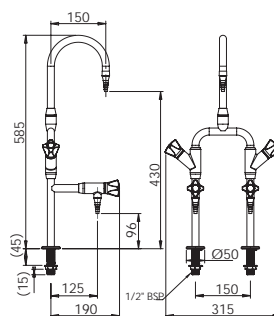
Order Code:

LCN108 - Ceramic Disc

LCN108I - Ceramic Disc with Isolation Valve

LCN108N - Needle Valve

LCN108NI - Needle Valve with Isolation Valve



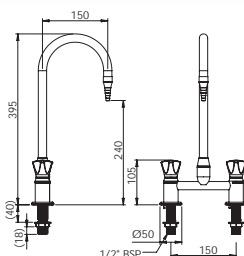
BENCH MOUNTED LABORATORY MIXING SET WITH SWIVEL GOOSENECK OUTLET

Order Code:

LCN113 - Ceramic Disc

LCN113N - Needle Valve

LCN113L - Ceramic Disc,
150mm Lever Handle (water only)



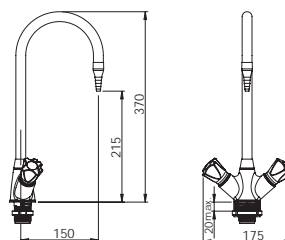
DUAL MIXER WITH SWIVEL GOOSENECK OUTLET

Order Code:

LC130 - Ceramic Disc

LC130N - Needle Valve

*Supplied with 350mm flexible hoses
with 1/2" BSP female connections*



WATER FITTINGS - PENDANT MOUNTED

2 WAY PENDANT LABORATORY TAP

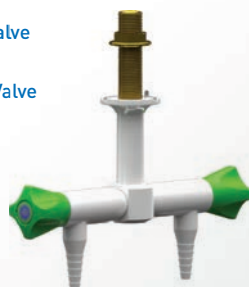
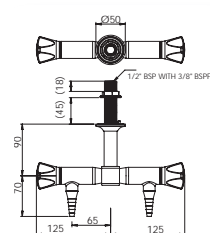
Order Code:

LCN119 - Ceramic Disc

LCN119I - Ceramic Disc with Isolation Valve

LCN119N - Needle Valve

LCN119NI - Needle Valve with Isolation Valve



STRAIGHT PENDANT MOUNTED LABORATORY TAP

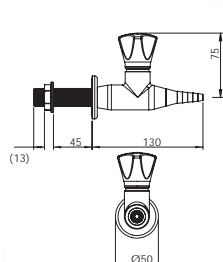
Order Code:

LCN142W - Ceramic Disc

LCN142WI - Ceramic Disc with Isolation Valve

LCN142WN - Needle Valve

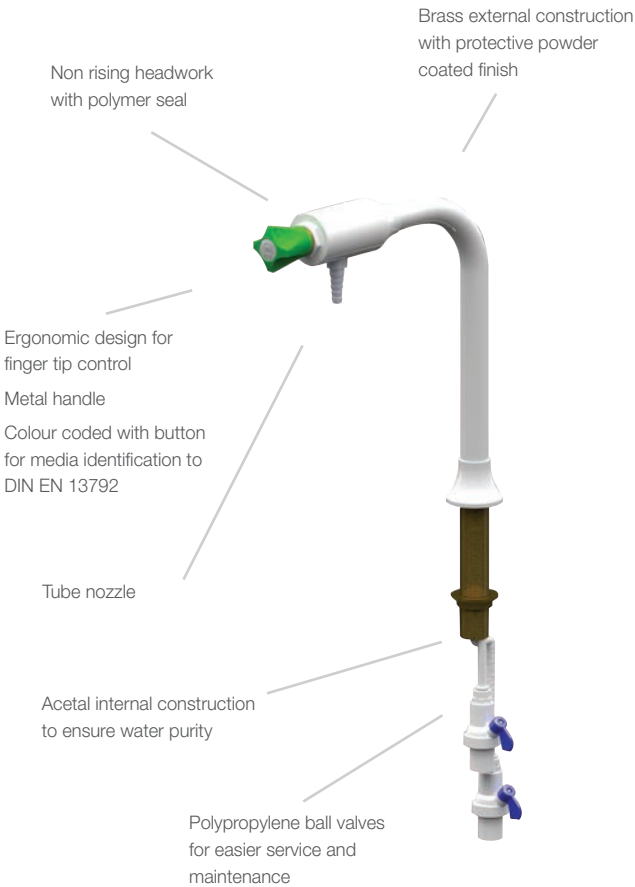
LCN142WNI - Needle Valve with Isolation Valve



SPECIALIST WATER FITTINGS

ENWARE'S COMLAB SPECIALIST WATER FITTINGS HAVE BEEN DEVELOPED PRIMARILY FOR PROTECTING WATER INTEGRITY FOR MAINTAINING MAXIMUM WATER PURITY. PURIFIED WATER IS AGGRESSIVE TOWARDS DZR BRASS USED IN ENWARE'S STANDARD RANGE OF WATER FITTINGS. COMLAB SPECIALIST WATER FITTINGS ARE MADE FROM MATERIALS SUITABLE FOR USE WITH SPECIAL WATER APPLICATIONS.

REVERSE OSMOSIS (RO) FITTINGS



Enware's Reverse Osmosis (RO) Water fittings are ideal for all pure water applications including distilled, demineralised or deionised water. The water is recirculating constantly up to the point of draw to ensure no dead leg within fittings. All RO water fittings internal waterways incorporate inert materials, ensure water supply purity, which are protected by a durable powder coated brass external construction.

For front panel valve options refer to page 17.

STAINLESS STEEL FITTINGS



Enware's 316 stainless steel range is designed to suit deionised, demineralised, distilled and pure water applications. The durable powder coat offers significant protection against corrosion, discolouration and surface damage.

TECHNICAL INFORMATION

Connection	1/4" BSP Female at ball valve 3/4" BSP (Tail)
Working Pressure Range	10-700kPa 500kPa Max*
Maximum Testing Pressure	1000kPa
Working Temperature Range	0-90°C
Outlet Connection	Tube Nozzle

TECHNICAL INFORMATION

Connection	1/2" BSP Male
Working Pressure Range - Needle Valve	10-700kPa 500kPa Max*
Maximum Testing Pressure	1000kPa
Working Temperature Range	0-90°C
Outlet Connection	Tube Nozzle

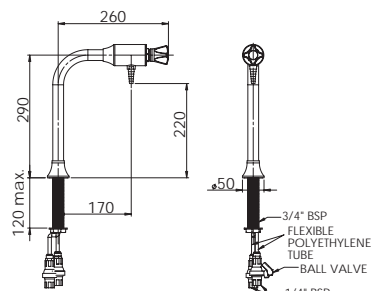
*Enware Products are to be installed in accordance with AS/NZS 3500.

SPECIALIST WATER

REVERSE OSMOSIS (RO) WATER FITTINGS

BENCH MOUNTED REVERSE OSMOSIS WATER FITTING FOR RECIRCULATING SYSTEMS

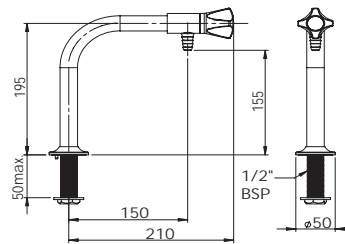
Order Code:
LFP026



STAINLESS STEEL TAPWARE

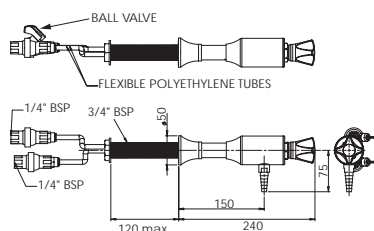
BENCH MOUNTED STAINLESS STEEL STANDARD RIGHT ANGLE VALVE WITH TUBE NOZZLE - NEEDLE VALVE

Order Code:
LFP012



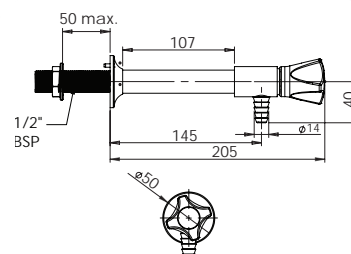
WALL MOUNTED REVERSE OSMOSIS WATER FITTING FOR RECIRCULATING SYSTEMS

Order Code:
LFP027



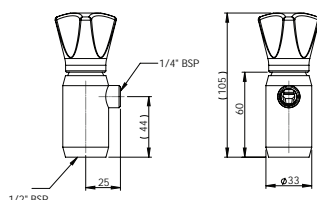
WALL MOUNTED STAINLESS STEEL RIGHT ANGLE VALVE WITH TUBE NOZZLE - NEEDLE VALVE

Order Code:
LFP013



TYPE 17 1 WAY STAINLESS STEEL 90 DEGREE PURE WATER LABORATORY - WALL MOUNTED

Order Code:
LFP014



DRY MEDIA FITTINGS



ENWARE'S COMLAB DRY MEDIA OUTLETS ARE SUPPLIED WITH A TAPERED TUBE NOZZLE AND ARE ASSEMBLED FOR EACH SPECIFIC MEDIA TYPE.

The durable powder coat finish gives significant protection against corrosion, discolouration and surface damage. ComLab handles are ergonomically designed for precise feel and finger tip control. Handles are colour coded for easy service identification and use complimentary buttons.

KEY POINTS

- Suited for dry media up to technical gas level 2.0 (with isolation valve), 4.0 (without isolation valve) and higher upon request
- Specify media when ordering for colour coding and media identification - refer to DIN EN 13792 chart on page 18
- For more options such as Quick Connections, Threaded Outlets or Swage Locks please contact your Enware Representative.

TECHNICAL INFORMATION

Connection	1/2" BSP Male 3/8" BSP Female
Working Pressure Range - Needle Valve	700kPa (Dry Media)
Maximum Testing Pressure	1000kPa
Working Temperature Range	0-90°C
Outlet Connection	Tube Nozzle 3/8" BSP Female (without nozzle) Other options available
Dry Media Options	Argon, Carbogen, Carbon Dioxide, Compressed Air, Helium, Hydrogen, Nitrogen, Nitrous Oxide, Oxygen, Vacuum. <i>NOTE: Client to specify media type</i>

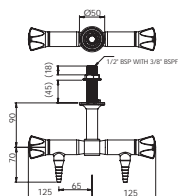
DRY MEDIA

2 WAY RIGHT ANGLE PENDANT MOUNTED LABORATORY TAP

Order Code:

LCN119N - Needle Valve

LCN119NI - Needle Valve with Isolation Valve

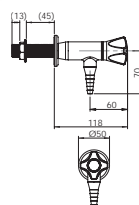


RIGHT ANGLE WALL OR BENCH MOUNTED LABORATORY TAP

Order Code:

LCN140WN - Needle Valve

LCN140WNI - Needle Valve with Isolation Valve

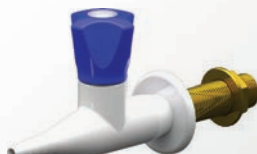
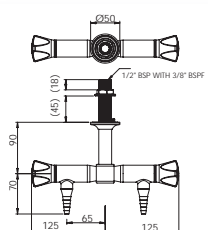


STRAIGHT WALL MOUNTED LABORATORY TAP

Order Code:

LCN142WN - Needle Valve

LCN142WNI - Needle Valve with Isolation Valve

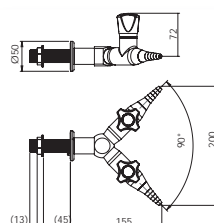


2 WAY STRAIGHT 90 DEGREE WALL MOUNTED LABORATORY TAP

Order Code:

LCN143WN - Needle Valve

LCN143WNI - Needle Valve with Isolation Valve

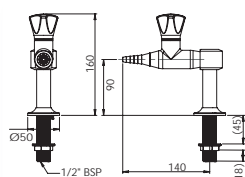


1 WAY BENCH MOUNTED LABORATORY TAP

Order Code:

LCN145N - Needle Valve

LCN145NI - Needle Valve with Isolation Valve

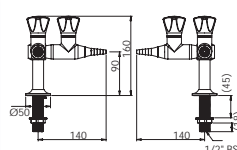


2 WAY 90 DEGREE BENCH MOUNTED LABORATORY TAP

Order Code:

LCN146N - Needle Valve

LCN146NI - Needle Valve with Isolation Valve

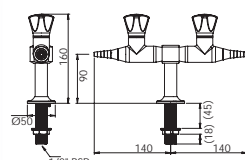


2 WAY 180 DEGREE BENCH MOUNTED LABORATORY TAP

Order Code:

LCN147N - Needle Valve

LCN147NI - Needle Valve with Isolation Valve

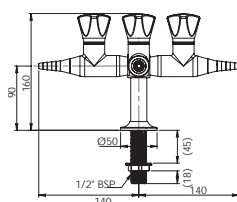


4 WAY BENCH MOUNTED LABORATORY TAP

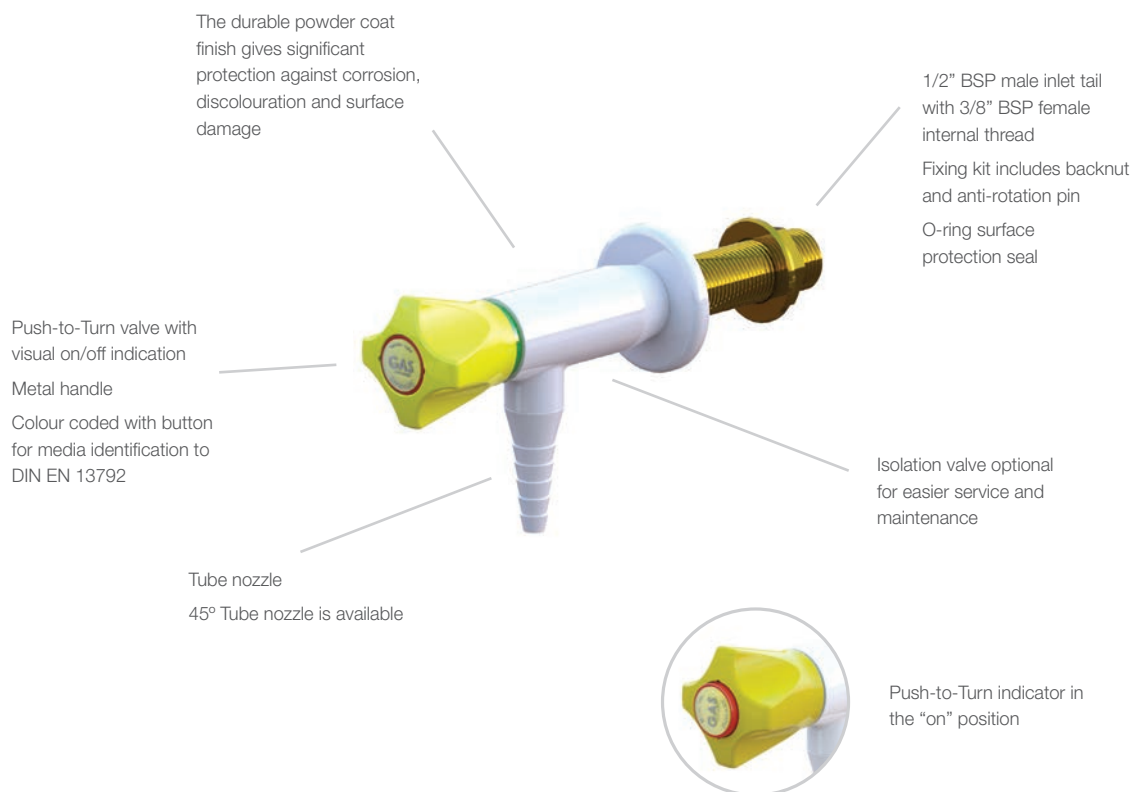
Order Code:

LCN148N - Needle Valve

LCN148NI - Needle Valve with Isolation Valve



BURNING GAS FITTINGS



ENWARE'S COMLAB LABORATORY OUTLETS ARE SUPPLIED WITH A TAPERED TUBE NOZZLE AND ARE ASSEMBLED FOR EACH SPECIFIC MEDIA TYPE.

Activation methods include a needle valve, for accurate adjustment or a push-to-turn valve with visual on/off indication. ComLab handles are ergonomically designed for precise feel and fingertip control. Handles are colour coded for easy service identification and use complimentary buttons.

KEY POINTS

- AGA approved
- Suited for burning gases up to technical gas level 2.0
- Specify media when ordering for colour coding and media identification - refer to DIN EN 13792 chart on page 18
- For more options such as Quick Connections, Threaded Outlets or Swage Locks please contact your Enware Representative.

TECHNICAL INFORMATION

Connection	1/2" BSP Male
	3/8" BSP Female*
Recommended Maximum Working Pressure Needle Valve	7kPa (Burning Gases)
	7kPa (Burning Gases)
Outlet Connection	Tube Nozzle
	3/8" BSP Female (without nozzle)
Burning Gas Options	Other options available
	Acetylene, Ethylene, Methane, Natural Gas, LPG, Propylene
	<i>NOTE: Client to specify media type</i>

*1/4" Female available. See page 21.

BURNING GASES

2 WAY RIGHT ANGLE PENDANT MOUNTED LABORATORY TAP

Order Code:

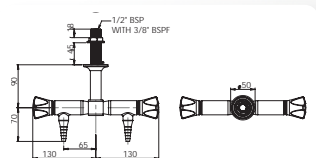
LCN119B - Push to turn Valve -

Burning Gas Only

LCN119BI - Push to turn Valve with
Isolation Valve - Burning Gas Only

LCN119N - Needle Valve

LCN119NI - Needle Valve with
Isolation Valve



RIGHT ANGLE WALL OR BENCH MOUNTED LABORATORY TAP

Order Code:

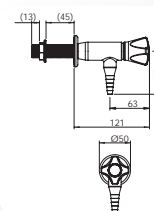
LCN140WB - Push to turn Valve -

Burning Gas Only

LCN140WBI - Push to turn Valve with
Isolation Valve - Burning Gas Only

LCN140WN - Needle Valve

LCN140WNI - Needle Valve with
Isolation Valve



STRAIGHT WALL MOUNTED LABORATORY TAP

Order Code:

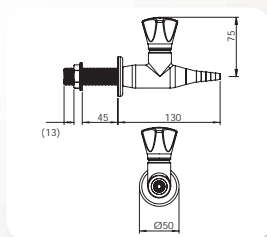
LCN142WB - Push to turn Valve -

Burning Gas Only

LCN142WBI - Push to turn Valve
with Isolation Valve - Burning Gas Only

LCN142WN - Needle Valve

LCN142WNI - Needle Valve with
Isolation Valve



2 WAY STRAIGHT 90 DEGREE WALL MOUNTED LABORATORY TAP

Order Code:

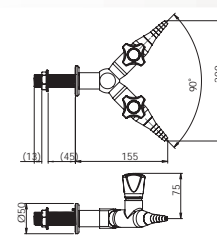
LCN143WB - Push to turn Valve -

Burning Gas Only

LCN143WBI - Push to turn Valve
with Isolation Valve - Burning Gas Only

LCN143WN - Needle Valve

LCN143WNI - Needle Valve with
Isolation Valve



1 WAY BENCH MOUNTED LABORATORY TAP

Order Code:

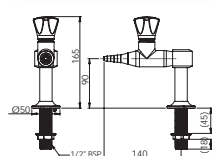
LCN145B - Push to turn Valve -

Burning Gas Only

LCN145BI - Push to turn Valve
with Isolation Valve - Burning Gas Only

LCN145N - Needle Valve

LCN145NI - Needle Valve with Isolation Valve



2 WAY 90 DEGREE BENCH MOUNTED LABORATORY TAP

Order Code:

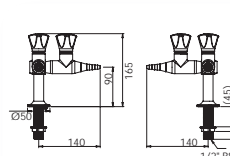
LCN146B - Push to turn Valve -

Burning Gas Only

LCN146BI - Push to turn Valve
with Isolation Valve - Burning Gas Only

LCN146N - Needle Valve

LCN146NI - Needle Valve with Isolation Valve



2 WAY 180 DEGREE BENCH MOUNTED LABORATORY TAP

Order Code:

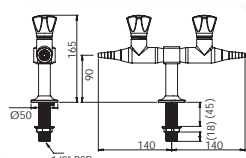
LCN147B - Push to turn Valve -

Burning Gas Only

LCN147BI - Push to turn Valve
with Isolation Valve - Burning Gas Only

LCN147N - Needle Valve

LCN147NI - Needle Valve with Isolation Valve



4 WAY BENCH MOUNTED LABORATORY TAP

Order Code:

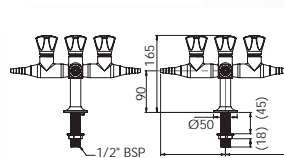
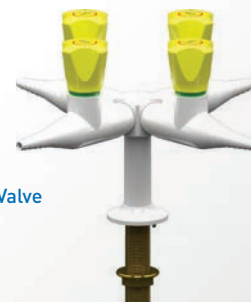
LCN148B - Push to turn Valve -

Burning Gas Only

LCN148BI - Push to turn Valve
with Isolation Valve - Burning Gas Only

LCN148N - Needle Valve

LCN148NI - Needle Valve with Isolation Valve



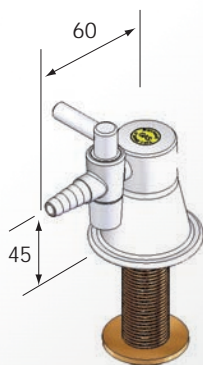
NOTE: All images shown here are push-to-turn valve. Needle valve option does not have pop up indication - refer to dry media section for product dimensions.

BURNING GASES - LOW PRESSURE GAS ONLY (MAX 7kPa)

TYPE 38 1 WAY GAS TURRET - STANDARD

Order Code:
LC123

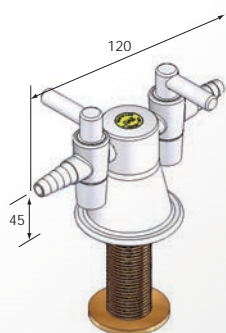
Also available with female inlet



TYPE 39 2 WAY GAS TURRET 180° STANDARD

Order Code:
LC124

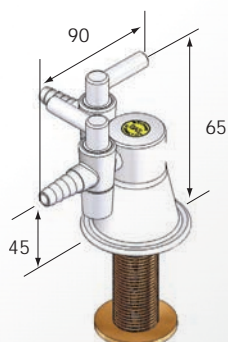
Also available with female inlet



TYPE 40 2 WAY GAS TURRET 90° STANDARD

Order Code:
LC125

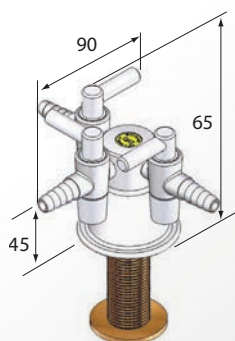
Also available with female inlet



TYPE 41 3 WAY GAS TURRET STANDARD

Order Code:
LC126

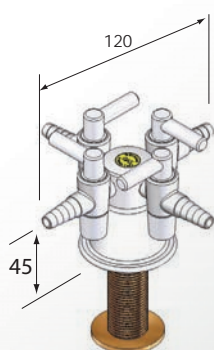
Also available with female inlet



TYPE 42 4 WAY GAS TURRET STANDARD

Order Code:
LC127

Also available with female inlet



FUME CUPBOARD FITTINGS

The durable powder coat finish gives significant protection against corrosion, discolouration and surface damage



LCN152 Models have connection options:

- 1/8" BSP Female
- 1/4" BSP Male
- Quick Connect

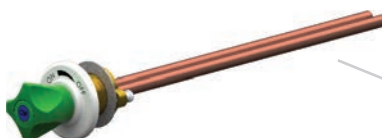
Ergonomic design for finger tip control

Metal handle

Colour coded with button for media identification to DIN EN 13792

Headwork options:

- Ceramic disc (water only)
- Needle Valve (water, dry media and burning gas)
- Push-to-Turn (burning gas only)



LCN150 Models have connection options:

- Copper tail
- Copper tail with 1/4" BSP Male
- Quick Connect

The durable powder coat finish gives significant protection against corrosion, discolouration and surface damage



Colour coded identification on outlets for visual matching to media control

Back plate is zone 1, middle ring is zone 2 and front ring is zone 3

(refer to media chart on page 18)

Tube nozzle

ENWARE'S COMLAB FUME CUPBOARD FITTINGS ARE AVAILABLE IN A WIDE RANGE OF CONNECTION TYPES. COMPLIMENTARY OUTLETS AND HOSES ARE AVAILABLE FOR A COMPLETE INSTALLATION SOLUTION.

The durable powder coat finish gives significant protection against corrosion, discolouration and surface damage.

ComLab handles are ergonomically designed for precise feel and finger tip control. Handles are colour coded for easy service identification and use complimentary buttons.

Outlets are also colour coded for easier identification with media type.

KEY POINTS

- WaterMark approved to AS/NZS 3718
- Ceramic disc suits potable water (refer to pg.4)
- Needle valve suited for dry media (refer to pg.9)
- Push-to-turn suited for burning gases (refer to pg.11)
- Specify media when ordering for colour coding and media identification - refer to DIN EN 13792 chart on page 18
- For specialist water fittings for fume cupboards please contact your Enware representative.
- AGA Approved

TECHNICAL INFORMATION

Connection	1/2" BSP Male
	3/8" BSP Female
Recommended Maximum Working Pressure - Needle Valve	700kPa
Recommended Maximum Working Pressure - Ceramic Disc	500kPa*
Recommended Maximum Working Pressure - Push-to-Turn Valve	7kPa (burning gases)
Outlet Connection	Tube Nozzle
	3/8" BSP Female (without nozzle)
	Other options available

*Enware Products are to be installed in accordance with AS/NZS 3500.

FUME CUPBOARD

CONTROLS

Enware's ComLab range of front panel valves are available in a wide range of connection types. Each hand is colour coded to match media type and outlets are also paired in colour identification. Media types are to be specified when ordering.

For customised solutions please contact your Enware representative.



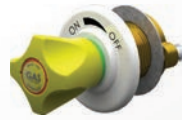
CERAMIC DISC

For water only applications.



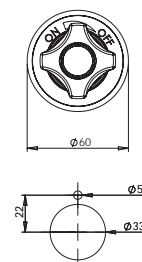
NEEDLE VALVE

Suits water, dry media and burning gas media.



PUSH-TO-TURN

Suits burning gases only.



INSTALLATION DETAIL
PLEASE CHECK LOCKING PIN POSITION BEFORE INSTALLATION AS ORIENTATION MAY VARY

FRONT PANEL VALVE

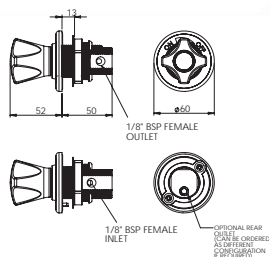
1/8" BSP FEMALE

Order Code:

LCN152F - Ceramic Disc - 1/8" BSP Female (water only)

LCN152NF - Needle Valve - 1/8" BSP Female

LCN152BF - Push-To-Turn - 1/8" BSP Female (Burning Gas only)



FRONT PANEL VALVE WITH TAILS

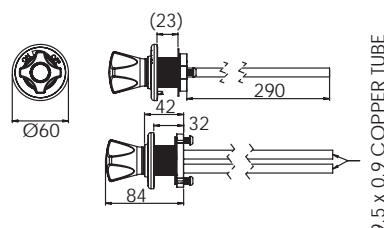
COPPER TAILS

Order Code:

LCN150 - Ceramic Disc - Copper Tube (water only)

LCN150N - Needle Valve - Copper Tube

LCN150B - Push-To-Turn - Copper Tube (Burning Gas only)



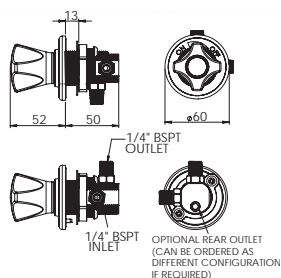
1/4" BSP MALE

Order Code:

LCN152M - Ceramic Disc - 1/4" BSP Male (water only)

LCN152NM - Needle Valve - 1/4" BSP Male

LCN152BM - Push-To-Turn - 1/4" BSP Male (Burning Gas only)



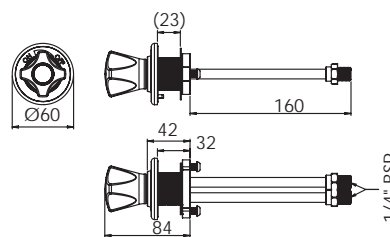
COPPER TAILS WITH 1/4" BSP MALE

Order Code:

LCN150M - Ceramic Disc - Copper Tube (water only)

LCN150NM - Needle Valve - Copper Tube

LCN150BM - Push-To-Turn - Copper Tube (Burning Gas only)

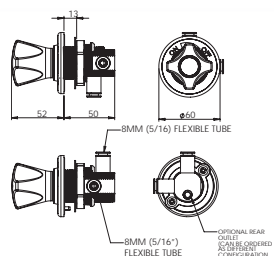


QUICK CONNECTIONS

Order Code:

LCN152Q - Ceramic Disc - Quick Connect (water only)

LCN152NQ - Needle Valve - Quick Connect (not suitable for burning gas)

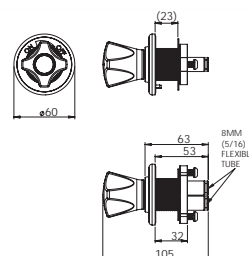


QUICK CONNECTIONS

Order Code:

LCN150Q - Ceramic Disc - Quick Connect (water only)

LCN150NQ - Needle Valve - Quick Connect (not suitable for burning gas)



OUTLET OPTIONS

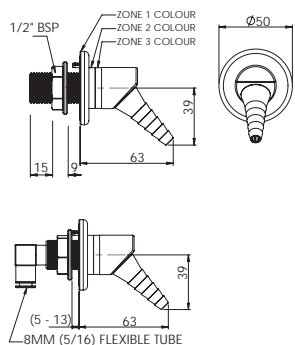
WATER, DRY MEDIA OR BURNING GAS - SPECIFY MEDIA WHEN ORDERING

45° FUME CUPBOARD OUTLET

Order Code:

LCN160 - 1/2" MI - 3/8" FI - Specify media

LCN160Q - Quick Connect - Specify media



90° FUME CUPBOARD OUTLET

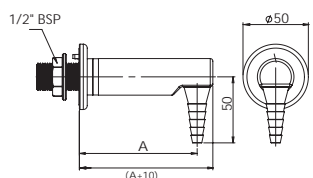
Order Code:

LCN161S - A. 55 mm - Specify media

LCN161 - A. 90 mm - Specify media

LCN166 - A. 155 mm - Specify media

Also available with quick connect inlet



WATER FITTINGS

GOOSENECK SWIVEL SPOUT - BENCH MOUNTED

Order Code:

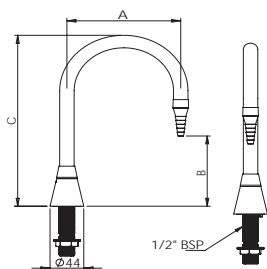
LCN162 - A. 150 mm B. 105 mm C. 260 mm

LCN163 - A. 150 mm B. 190 mm C. 345 mm

LCN164 - A. 200 mm B. 265 mm C. 90 mm

*Fixed spout available - specify when ordering.
Note overall height of spout will be approximately 30mm less.*

1/2" MI Standard. For Quick Connect request when ordering.



GOOSENECK SWIVEL SPOUT - WALL MOUNTED

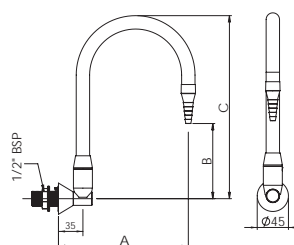
Order Code:

LCN162W - A. 185 mm B. 105 mm C. 260 mm

LCN163W - A. 185 mm B. 190 mm C. 345 mm

*Fixed spout available - specify when ordering.
Note overall height of spout will be approximately 30mm less.*

1/2" MI Standard. For Quick Connect request when ordering.

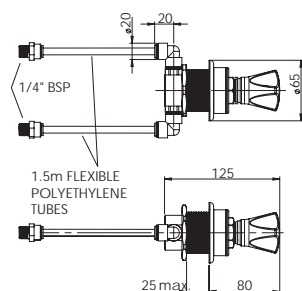


SPECIALIST WATER FITTINGS

PURE WATER CONTROL VALVE

Order Code:

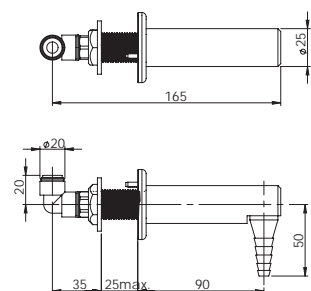
LFP029 - Specify Media



PURE WATER 90° FUME CUPBOARD OUTLET

Order Code:

LFP161 - 90 mm - Specify Media












































COMMERCIAL LABORATORY TAPWARE

COLOUR CODED IDENTIFICATION CHART

Colour coding for media identification on handles, buttons and outlets follow the recommendations of DIN EN 13792. Tough, corrosion-resistant, coloured powder-coating makes the range suitable for the harshest laboratory environment. Specify the media type when ordering for correct colour identification and lubricant.

Not all products are suitable for all media types due to material compatibility- exclusions apply. Contact Enware for details.

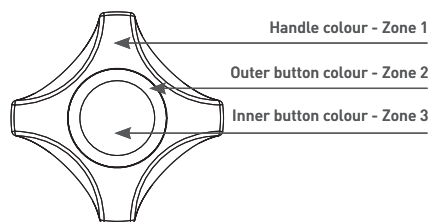
DIN EN 13792 RECOMMENDATIONS

MEDIA	COLOUR - ZONE 1		ZONE 2	ZONE 3	TEXT SYMBOL
COLD WATER		GREEN	GREEN	BLUE	
HOT WATER		GREEN	GREEN	RED	
DEMINERALISED WATER		GREEN	GREY	BLUE	
STEAM*		GREEN	RED	RED	
PROPANE		YELLOW	BLUE	RED	
BUTANE		YELLOW	BLUE	BLUE	
LPG		YELLOW	RED	YELLOW	
METHANE		YELLOW	BLUE	YELLOW	
ETHENE		YELLOW	BLACK	GREEN	
PROPENE		YELLOW	BLACK	RED	
ACETYLENE		YELLOW	WHITE	GREEN	
NATURAL GAS		YELLOW	YELLOW	YELLOW	
HYDROGEN		RED	RED	RED	
NITROGEN		BLUE	GREEN	GREEN	
NITROUS OXIDE		BLUE	GREEN	BLUE	
COMPRESSED AIR		BLUE	BLUE	YELLOW	
OXYGEN		BLUE	BLUE	BLUE	
CARBON DIOXIDE		BLUE	BLUE	BLACK	
CARBOGEN (CO ² + O ²)		BLUE	BLACK	BLUE	
ARGON		BLUE	GREY	GREY	
HELIUM		BLUE	GREY	WHITE	
VACUUM		GREY	GREY	GREY	

*SPECIAL HANDLE AND VALVING FOR STEAM FITTINGS.

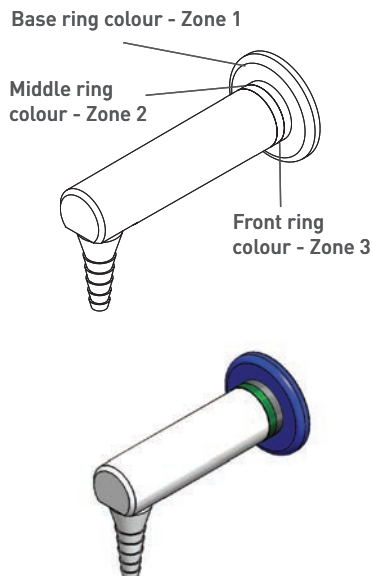
HANDLE COLOUR - ZONES

Enware's ComLab handle has been designed for precise feel and finger tip control. The handle is colour powder coated to match Zone 1 of the media type.



FUME CUPBOARD OUTLET COLOUR - ZONES

Outlet identification for fume cupboard outlets are created using rings as illustrated. The larger base ring represents Zone 1.



All fittings have standard 1/2" BSP tail or female inlet. The male tails are bevelled to facilitate media supply connection including flexible hoses. Bases are complete with O-ring seal to protect the bench surface. Bases also have an anti-rotation device.

Coloured indicator rings are available. Colour options are: Green, Yellow, Blue, Red or Grey.

TECHNICAL INFORMATION

FINISHES

Enware's commercial fittings are professionally finished in an advanced powder-coat. The durable finish provides maximum resistance against corrosion, discolouration and other surface damage.

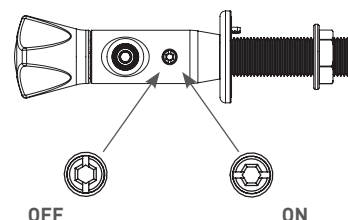
Colour Coded Handles and Buttons are to DIN EN 13792 recommendations, and text-symbols are incorporated. For complete colour coding information please refer to the chart on page 18.

Chrome plating and alternate powder coat finishes are available.

INTEGRAL SERVICE VALVE OPTION

Enware's ComLab range includes an option for an integrated isolation valve for easier in situ servicing or flow control of equipment when required.

The isolation valves can be used with an allen key or flat head screw driver.



VALVING/HEADWORKS OPTIONS

CERAMIC DISC

The latest 3/4 turn (270°) ceramic disc technology is used, providing the benefits of finer adjustment operator control. For water applications only.



NEEDLE VALVE

The non-rising needle valve incorporates a replaceable Teflon needle and 316 stainless steel seat to provide accurate control with optimum serviceable life.



PUSH-TO-TURN VALVE

Pushing the handle with an easy quarter turn (90°) rotation operates this valve. The push-to-turn sba works in unison with the handle to create a visual indication of when burning gas valve is on or off.



Note: AS/NZS 3500 states a maximum working pressure of 500kPa at outlet points.

LUBRICATING GREASE

All headworks for water and dry media are supplied with recommended authorised lubricating greases - in accordance with both Australian and DIN standards.

For specific details please refer to the Table of Lubricants Used

The correct lubricants will ensure reliable operation and long service. For tapware and gas controls, the lubricant must meet the following primary requirements:

- Resistant to ambient media, eg: flammable gases/fluids
- Sealing and securing
- Neutrality towards materials, i.e: metals and elastomers
- Should not contaminate the relevant media.

Warning: for Oxygen related media

Valves for Oxygen, Carbogen and Nitrous Oxide must be ordered specifically for these services to ensure that lubricants and 'o' rings are compatible with the service being controlled. It is potentially dangerous to interchange handles and headworks.

TABLE OF LUBRICANTS USED

MEDIA	NEEDLE VALVE HEADWORK	GREASE
1. Water	Viton "O" Ring	Hydrosal Food Pro
2. Vacuum	Viton "O" Ring	Barrierta L55/3HV
3. Compressed Air	Viton "O" Ring	Nontrop 2B91DIN
4. Oxygen	Viton "O" Ring	Oxigenoex FF250
5. LPG/Propane/Butane	Viton "O" Ring	Nontrop 2B91DIN
6. Acetylene	Viton "O" Ring	Nontrop 2B91DIN
7. Hydrogen	Viton "O" Ring	Nontrop 2B91DIN
8. Nitrogen	Viton "O" Ring	Nontrop 2B91DIN
9. Carbon dioxide	Viton "O" Ring	Nontrop 2B91DIN
10. Argon	Viton "O" Ring	Nontrop 2B91DIN
11. Helium	Viton "O" Ring	Nontrop 2B91DIN
12. Methane	Viton "O" Ring	Nontrop 2B91DIN
13. Ethylene	Viton "O" Ring	Nontrop 2B91DIN
14. Propene	Viton "O" Ring	Nontrop 2B91DIN
15. Natural Gas	Viton "O" Ring	Nontrop 2B91DIN
16. Steam*	Viton "O" Ring	Staburags NBU30
17. Nitrous Oxide	Viton O Ring	Oxigenoex FF250
18. Carbogen	Viton O Ring	Oxigenoex FF250

**Special handle and valving for steam fittings*

SPARE PARTS AND OPTIONS



HANDLES

Order Code:

LCN191 - Specify media (handle only)

BUTTONS - SPECIFY MEDIA WHEN ORDERING

Order Code:

LCN181 - Dry Media to suit LCN

LCN182 - Water Only to suit LCN



CERAMIC DISC HEADWORKS

Order Code:

LCN183 - 3/4 Turn Ceramic Disc to suit LCN Water Only



NEEDLE VALVE HEADWORKS

Order Code:

LCN184 - Needle Valve to suit LCN (specify media)



PUSH-TO-TURN HEADWORKS

Order Code:

LCN192 - Push-to-turn top assembly (Burning Gas Only - Specify Media)



SPARE PARTS AND OPTIONS

TAIL OPTIONS

Order Code:

MIS511 - 50 mm x 1/2" MI

MIS512 - 87 mm x 1/2" MI

MIS513 - 103 mm x 1/2" MI

TAIL OPTIONS WITH INTERNAL THREAD

Available by request

40 mm x 1/2" MI x 1/4" FI

50 mm x 1/2" MI x 1/4" FI

76 mm x 1/2" MI x 3/8" FI

87 mm x 1/2" MI x 3/8" FI



QUICK CONNECTIONS

Order Code:

LCN173 - Straight - 1/8 BSP x 8mm

LCN174 - Right angle [90°] - 1/8 BSP x 8mm

STAINLESS STEEL BRAIDED HOSE - 1 METRE WITH 1/4" X 1/2" F&F CONNECTIONS

Order Code:

LC188 - For Gas

LC189 - For Water

For alternate length or connection sizes please specify when ordering.

LDPE - LOW DENSITY POLYETHYLENE HOSE

Available by request

Per meter (Specify metres required)

Sold per metre, supplied as continuous hose to be cut on site.

TUBE NOZZLE

Order Code:

LCN170 - Water Only (Includes Dual Check Valve)

LCN171 - Dry Media and Burning Gas

LCN187 - Dual check to suit LCN170 (Water Only)

LCN190 - 8lpm pressure compensating flow control to suit LCN170 (water only)



AERATOR

Order Code:

LCN172



45° TUBE NOZZLE OPTION

Special Order - Request when ordering product.



CUSTOM SPOUTS

Enware can customise spouts to suit your specifications.

Provide the following information when ordering:

1. Shape of spout
2. Wall or Hob Mounted
3. Swivel or Fixed
4. Desired dimensions for

A: = mm*

B: = mm

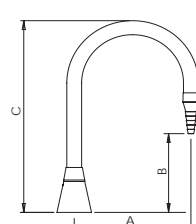
C: = mm

Note: Spouts shown in brochure are curved.

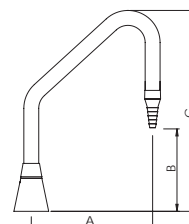
Square or angular shapes are also available.

**For Goose Neck (Curved) spout A must be 100, 150 or 200mm.*

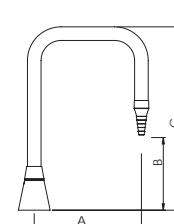
For variations use Angular or Square shape.



GOOSE NECK (CURVED)



ANGULAR



SQUARE

HAND WASH STATION SOLUTIONS

LEVA 150 MM WALL MOUNTED MIXING SET WITH SWIVEL AERATED SPOUT

Order Code:

LEV150402 - Ceramic Disc

WELS 3 Star (7.7 lpm) water efficiency rating.



KOLO NOVA PRO RECTANGULAR BASIN 650

- 650mm long vitreous china basin
- Fully glazed under and over preventing bacteria growth
- Available with or without overflow



TAP NOT INCLUDED

Order Code:

KNP311662 - 1x taphole, 1x overflow

KNP311662-100 - 1x taphole, no overflow

KNP311660-100 - No taphole, no overflow

KNP31166222-100 - 3 x taphole, no overflow

ENMATIC VEGA SERIES SENSOR TAP WITH OPTIONAL TEMPERATURE ADJUSTER

Order Code:

ENM6222 - Mains Powered

ENM6250 - Battery Operated

WELS 3 Star (7.7 lpm) water efficiency rating.



KOLO NOVA PRO RECTANGULAR BASIN 600

- 600mm long vitreous china basin
- Fully glazed under and over preventing bacteria growth
- Available with or without overflow



TAP NOT INCLUDED

Order Code:

KNP311612 - 1x taphole, 1x overflow

KNP311612-100 - 1x taphole, no overflow

KNP311610-100 - No taphole, no overflow

AQUABLEND SQX™ THERMOSTATIC BASIN MIXER WITH EXTENDED LEVER HANDLE

Order Code:

ATM606D-4 - 7 Litres per minute

ATM606D-5 - 6 Litres per minute



KOLO NOVA PRO RECTANGULAR BASIN 450

- 450mm long vitreous china basin
- Fully glazed under and over preventing bacteria growth



TAP NOT INCLUDED

Order Code:

KNP322472 - 1x taphole on right side 1x overflow

KNP323472 - 1x taphole on left side 1x overflow

ADJUSTABLE HEIGHT WORKTOPS

Enware is pleased to offer a unique adjustable height range of solutions that can be adapted to just about any work place. Originally designed to assist wheel chair users, the clever system also helps improve OHS and create more flexibility in the work place by adjusting to user needs.

- Bench tops can move up to 300mm vertically
- Manual or electric versions
- Safety bar option for electric version
- Wall mount or freestanding frames

For more information contact your Enware representative or visit www.enware.com.au/worktops



EMERGENCY SAFETY SYSTEMS

Emergency shower and eye wash equipment is required where chemicals are stored, handled or there is a potential risk for an accident to occur where immediate decontamination will be required.

Enware's large range of emergency showers and eye wash equipment meets the requirements of AS4775 and the internationally recognised standard ANSI Z358.1-2009.

AS/NZS 2982.1-1997 Laboratory Design and Construction has minimum requirements for laboratory safety equipment where hazardous substances are used. Safety showers are designed to provide a large volume of water for the rapid removal of harmful substances.

Enware's manufactured emergency equipment is fabricated from stainless steel for maximum durability and reliability. The specially designed eye and eye/face wash units deliver soft streams of aerated water for rapid cleansing.



CHEMICAL HAZARD NEUTRALISATION

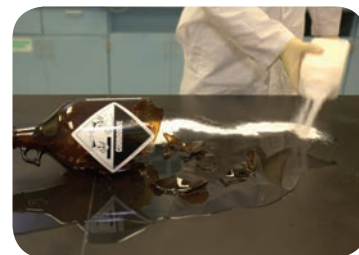
FASTACT - RAPID NEUTRALISER OF HAZARDOUS CHEMICALS AND VAPOURS

No more confusing responses

- Neutralises TOXIC chemical liquids and VAPOURS*
- Ideal solution for immediate laboratory chemical spill response
- Works on acids, caustics, toxics and solvents*
- Easy to maintain and use
- Non-toxic
- No limited shelf life
- No pre-mixing required

* Refer to the summary of effectiveness table.

Find out more at www.enware.com.au/fastact



TOBIN EYEWASH SYSTEMS

Tobin's saline eyewash system is a well proven, quick and safe way to wash chemicals from the eyes.

CONTROLLED FLOW

Tobin's bottle is constructed to empty under natural pressure, giving a soft flow. When the bottom air vent is opened a patient cannot increase the flow by squeezing the bottle. Each bottle provides 3 minutes of continuous flow.



WALL STAND - 5X 1 LITRE BOTTLES

Order Code:

TOB124 - 39(H) X 45(W) X 10(D) cm



WALL STAND - 2X 1 LITRE BOTTLES

Order Code:

TOB129 - 39(H) X 20(W) X 10(D) cm



OUR PRODUCTS HAVE BEEN PROUDLY USED IN:

- St Vincents Hospital Kinghorn Centre - NSW
- UNSW Wallace Wurth Building - NSW
- Latrobe Institute(LIMS) - Vic
- Deakin Uni (Waurin Ponds) - Vic
- Uni Of QLD Advanced Engineering Building - QLD
- Griffith Uni New Science Block Bld 40/41 - QLD
- SA Health nad Medical Research Institute - SA
- Flinders Uni Biological Sciences - SA
- Curtin Uni Laboratories Building 305 - WA
- UTAS- Inst. Of Marine and Antarctic Studies - Tas
- John Curtin School Of Medical Research - ACT
- Auckland University - NZ



commercial laboratory **solutions**
for the diverse requirements of every laboratory