

electronic toilet flushing systems

LATEST TECHNOLOGY

BUILT IN VANDAL RESISTANCE

SMART CHOICES FOR HYGIENE

AND WATER EFFICIENCY



 **ENWARE**
AUSTRALIA PTY LIMITED

WWW.ENWARE.COM.AU

touch activated flushing

NEAT AND RELIABLE WC FLUSHING SOLUTIONS FOR DEMANDING APPLICATIONS USING PIEZOELECTRIC TECHNOLOGY.

Enware's flushing solutions are a smart choice for hygiene & water efficiency - Using the latest technological advances including functional options.

With robust piezo operation and mains power it is ideal for demanding applications such as public washrooms, sports grounds, aquatic centres or aged care facilities.

Designed to allow for full access to the flushing components whilst still incorporating a high level of tamper-proof security.

- Robust piezo operation
- Shut off valve and filter included
- Vandal resistant torx screws
- ATS5200.020 Compliant
- Low maintenance
- Integral inlet strainer



WaterMark
ATS 5200.020
C of C 40116
Global-Mark



WATER EFFICIENCY

Enware touch activated flushing systems come with varying WELS water efficiency ratings.

Dual Flush systems have the choice of 3 or 4 Star WELS ratings

Single flush systems have a 1 Star WELS rating



TECHNICAL INFORMATION

Connection:	Inlet - 1" BSP (25mm)
	Outlet - 1/2" BSP (40mm)
Minimum Water Supply Line Size:	1" (25mm) copper pipe
Mains Powered:	24V AC Transformer
Kv Factor:	8.3m ³ /h
Flush Pipe: 700mm (+/- 100mm) of 1 1/2" (40mm) flush pipe is required below the air break. (Note: use a maximum of 1x90° bend after underneath unit. Use 45° bends in preference) For installation outside of this parameter please contact your Enware representative.	
SINGLE FLUSH Water Supply Pressure: 250 kPa* Pan: 5.5L Capacity (1 Star)	DUAL FLUSH Water Supply Pressure: 300 kPa* Pan: 6/3L Capacity (3 Star) 4.5/3L Capacity (4 Star)

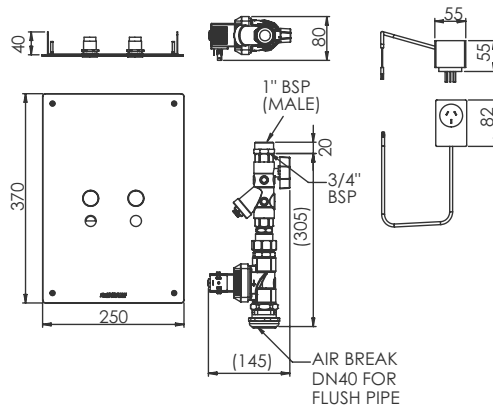
*operational

public washrooms
sporting grounds
aquatic centres
aged care
shopping centres

TOUCH ACTIVATED FLUSHING - FRONT ACCESS

WC DUAL FLUSH WITH FRONT ACCESS PANEL BOX

- Robust piezo operation
- Shut off valve and filter included
- Vandal resistant torx screws
- ATS5200.030 Compliant
- WELS 3 Star (6/3L) or 4 Star (4.5/3L) water efficiency rating
- Mains power 24V
- Large face plate for front access



Order Code:

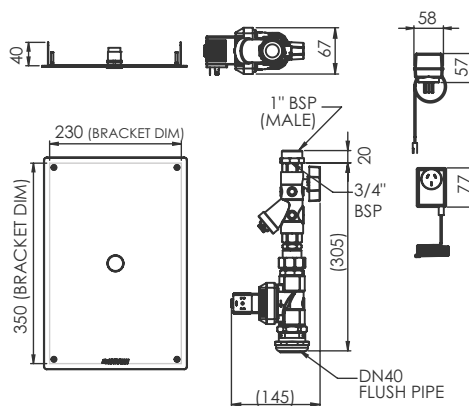
EMF411M-3 WELS 3 Star Rated

EMF411M-4 WELS 4 Star Rated



WC SINGLE FLUSH WITH FRONT ACCESS PANEL BOX

- Robust piezo operation
- Shut off valve and filter included
- Vandal resistant torx screws
- ATS5200.030 Compliant
- WELS 1 Star (5.5L) water efficiency rating
- Mains power 24V
- Large face plate for front access



Order Code:

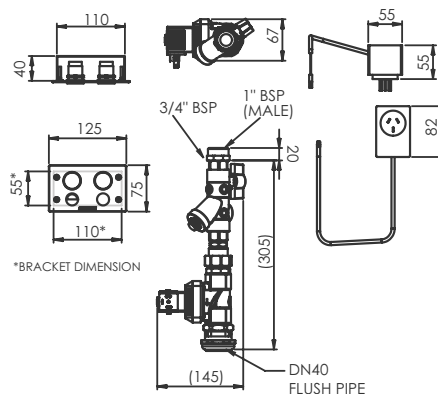
EMF401M-1 WELS 1 Star Rated



TOUCH ACTIVATED FLUSHING - DUCT ACCESS

WC DUAL FLUSH WITH DUCT ACCESS

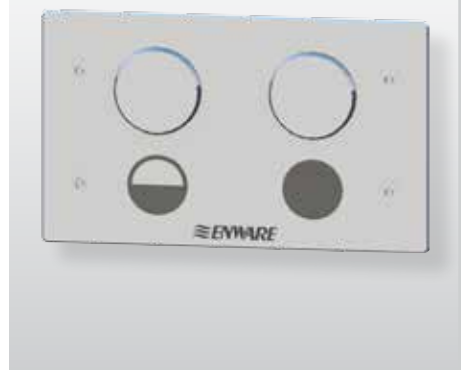
- Robust piezo operation
- Shut off valve and filter included
- Vandal resistant torx screws
- ATS5200.030 Compliant
- WELS 3 Star (6/3L) or 4 Star (4.5/3L) water efficiency rating
- Mains power 24V
- GPO style face plate



Order Code:

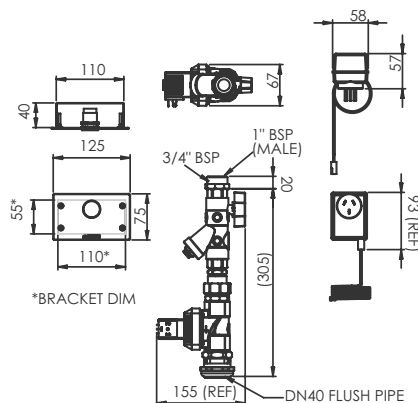
EMF410M-3 WELS 3 Star Rated

EMF410M-4 WELS 4 Star Rated



WC SINGLE FLUSH WITH DUCT ACCESS

- Robust piezo operation
- Shut off valve and filter included
- Vandal resistant torx screws
- ATS5200.030 Compliant
- WELS 1 Star (5.5L) water efficiency rating
- Mains power 24V
- GPO style face plate



Order Code:

EMF400M-1 WELS 1 Star Rated



RELATED PRODUCTS



URINAL FLUSHING SYSTEMS

Enware's Enmatic range of Urinal Flushing Devices includes touch activated or sensor activated systems.

For a complete selection including technical information please refer to Enware's Urinal Flushing brochure or visit www.enware.com.au

ALSO AVAILABLE FROM ENWARE:

ELECTRONIC TAPWARE

Water efficiency with hygienic, no touch activation for cold or mixed temperature water.



TIME FLOW TAPWARE

Vandal resistant self closing solutions to save water and improve hygiene.



SPRING ACTION TAPWARE

Heavy-duty Spring Action tapware and drinking fountains for public places.



VANDAL RESISTANT TAPWARE

Robust, easy to clean, vandal resistance for commercial, institutional and public use.



DETENTION TAPWARE

For high risk applications such as gaols, detention centres and public facilities.



CAREKIT - ACCESSIBLE TOILET SOLUTION

Convenience of bathroom elements in one easy kit for assisting with meeting DDA and AS1428 requirements for wheelchair accessible toilets.



ENWARE IN BRIEF

Enware is a world-leading Australian designer and manufacturer of quality specialist commercial tapware solutions and safety systems.

Since inception in 1937, Enware Australia has grown significantly. Today, Enware has offices located around the country and is represented in major regions throughout the world including Asia, the Pacific, the Middle East and Europe. As a global leader of specialist tapware and safety systems, Enware offers a more extensive range than any other company on the market.

SPECIALIST
PLUMBING SOLUTIONS

ADAPTABLE WORK
& LIVING SOLUTIONS

ENVIRONMENTAL ,HEALTH
& SAFETY SOLUTIONS

MORTUARY AND
FUNERAL EQUIPMENT



ADDRESS: 9 Endeavour Road, Caringbah NSW 2229 Australia
 POSTAL ADDRESS: PO Box 2545, Taren Point NSW 2229 Australia
 PHONE: 61 2 8556 4000 FAX: 61 2 8556 4055
 1300 369 273 (AUS) WWW.ENWARE.COM.AU INFO@ENWARE.COM.AU



Quality
Endorsed
Company

ISO 9001 Lic 1213
24/04/2014