

# Detention Push Button Basin Assembly Extended

## Installation & Maintenance Instructions

DET650



I00319\_Sep 19

NOTE: THIS DOCUMENT IS TO BE LEFT ONSITE WITH FACILITY MANAGER AFTER INSTALLATION

**Call 1300 369 273**  
**[www.enware.com.au](http://www.enware.com.au)**

Enware Australia Pty Limited  
9 Endeavour Rd Caringbah NSW 2229 Australia  
Ph: 02 8536 4000 [info@enware.com.au](mailto:info@enware.com.au)



# DETENTION PUSH BUTTON BASIN ASSEMBLY EXTENDED



## Installation & Maintenance Instructions

---

### technical data

Working Pressure Range	50-800 kPa
Recommended Maximum Pressure	500 kPa*
Working Temperature Range	5 °C – 85 °C *

For use with potable water only.

---

### compliance

\*Enware products are to be installed in accordance with the Plumbing Code of Australia and AS/NZS3500.

Reference should also be made to the Australasian Health Facility Guidelines (AHFG), ABCB and Local Government regulations when considering the choice of, and the installation of these products.

Thermostatic Mixing Valves and Pressure Reduction Valves may be required to comply with maximum temperature and pressure requirements.

---

### please note

Enware Australia advises:

1. Due to ongoing Research and Development, specifications may change without notice;
2. Component specifications may change on some export models.



**WaterMark**  
AS/NZS 3718  
WMKA 1583

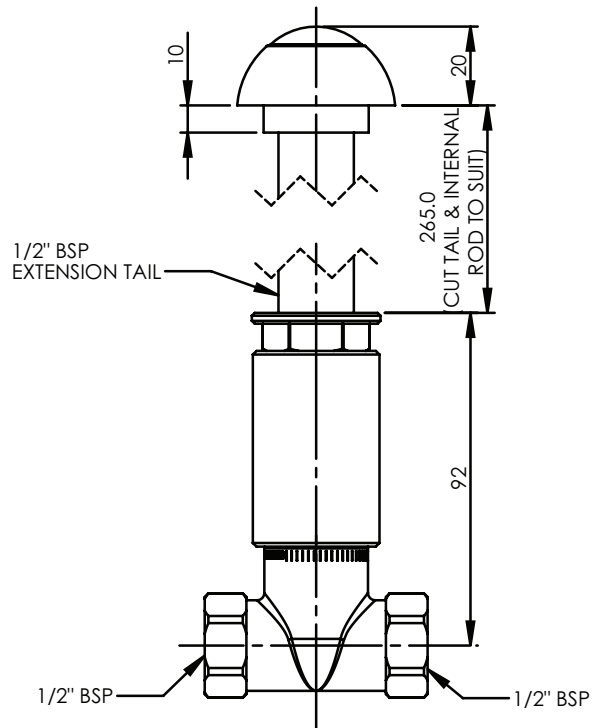
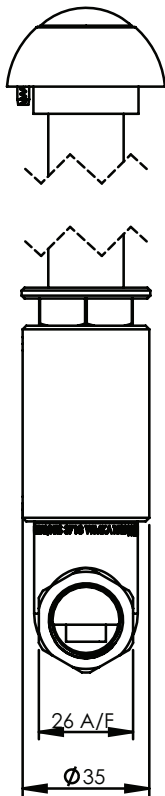
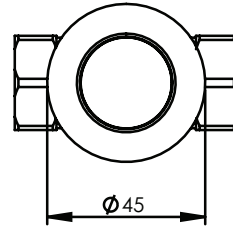
---

### before installation

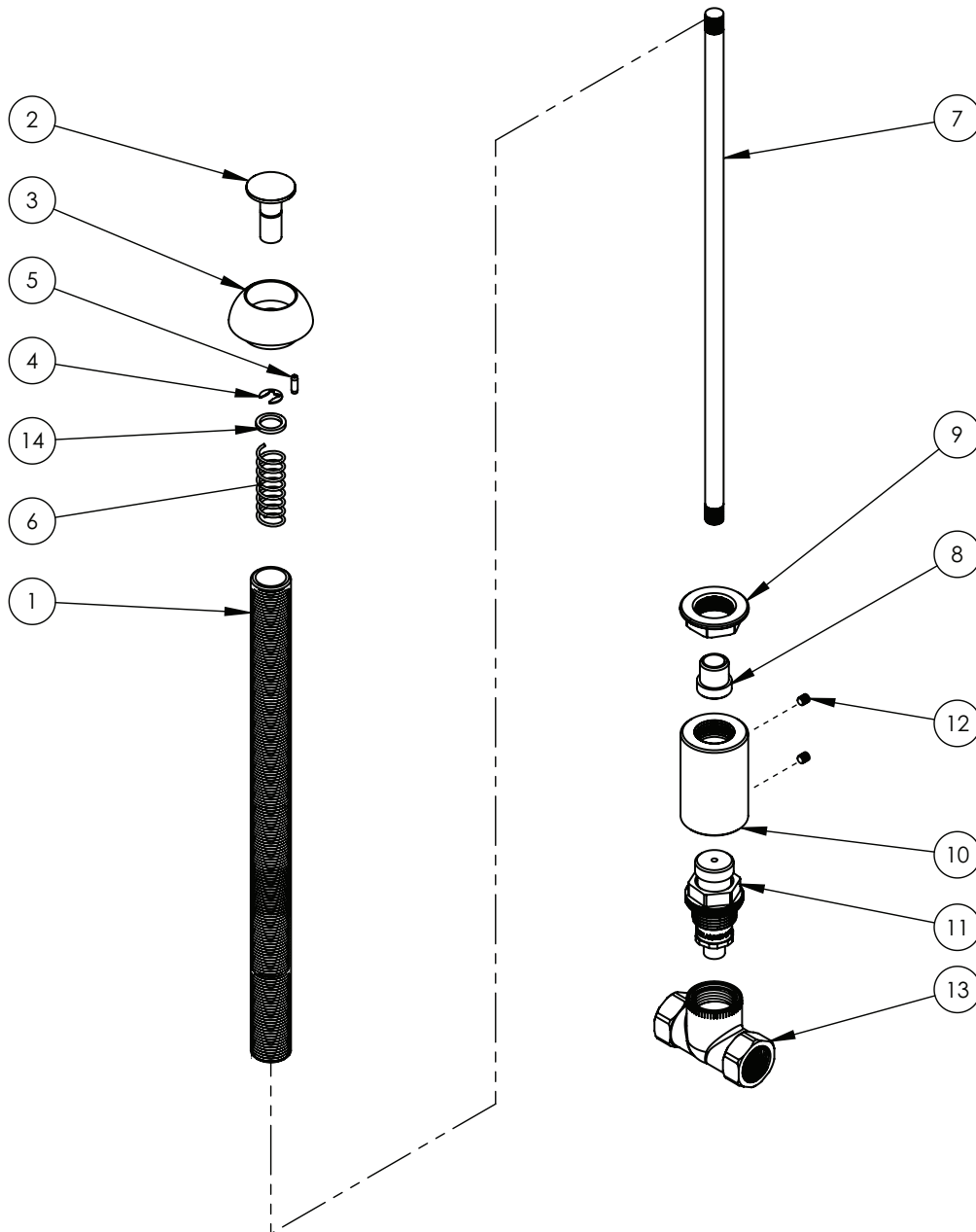
Before proceeding with installation

- Ensure all operating & dimensional specifications are suitable for the intended installation.
- Ensure all supply lines are flushed thoroughly to remove debris prior to the installation of this product as per AS/NZS 3500.1. Strainers (40 mesh) are recommended if debris is an ongoing problem.

# DIMENSIONS



# COMPONENTS



ITEM NO.	PART NUMBER	DESCRIPTION
1	761521	ALL THREAD TAIL-300MM
2	880087	PUSH BUTTON
3	881099	BUTTON BASE
4	672123	CIRCLIP
5	672381	WAVE PIN 3MM X 10MM S/S
6	672489	SPRING 1.4 X 14.8 X 54.5 304SS
7	893440	ROD
8	693084	NYLON BUSH
9	672051	BACK NUT
10	893126	CONNECTOR SOCKET
11	790259	SBA - SPRING LOADED VALVE
12	672455	GRUB SCREW 10-24 UNC X 3/16 S/S 304
13	892120	BODY F&F
14	893581	BRASS WASHER

# INSTALLATION

1. Drill a hole 32mm diameter by 10mm deep, for Button Base (3). Then drill the same hole through the wall, with diameter of the hole between 22mm – 25mm, for the All Thread (1). SEE IMAGE 01
2. Drill a hole 5mm diameter x 10mm deep, for anti-rotation pin. SEE IMAGE 01
3. Unscrew All Thread and button assembly from the Connector Socket (10), by first loosening the grub screw (12) on the Connector Socket.
4. Feed All-Thread through the drilled hole. (SEE IMAGE 02)
5. Screw the Back Nut onto all thread and fix the All Thread and button assembly in place.
6. All Thread (1) and Rod (7) can be cut down to suit wall depths less than 265mm. SEE IMAGE 02  
To do this, re-fit the Connector Socket, and first determine the length that is in excess. Dismantle All Thread (1) from the Button Base, and cut the excess length off the All Thread and Rod (7) by equal lengths. Reassemble All Thread onto Button Base and re-install onto wall.
7. Check that the Nylon Bush is located on the end of the All-Thread.
8. Screw in the Connector Socket (10) onto All Thread, but do not screw in all the way. Once the thread bottoms out, back off a few turns. There should be some free play (maximum 1mm) between the Push Button / Rod and the top of the SBA Spring Loaded Valve (11). Test this by pushing the Push Button (2) and feeling the button first depress by 1mm before it engages the SBA Spring Loaded Valve. SEE IMAGE 03  
Adjust as necessary by loosening or tightening the Connector Socket.  
Some adjustment can also be made by unscrewing the All Thread from the Button Base (3) by a few turns. SEE IMAGE 04 & 05.  
Ensure that the All Thread and the button assembly are not over-tightened into the Connector Socket, as this may cause the valve to leak.

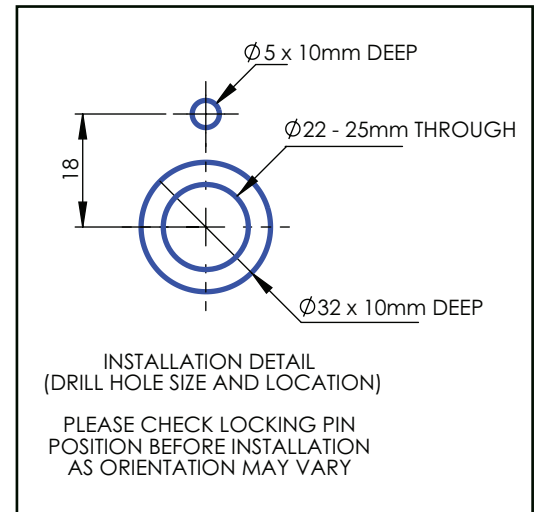


IMAGE 01

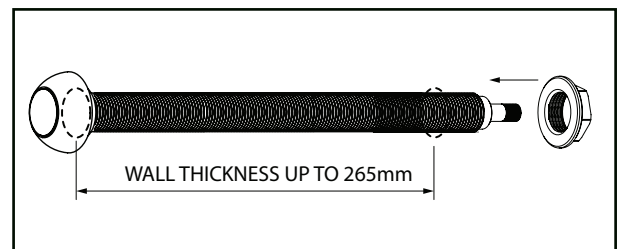


IMAGE 02

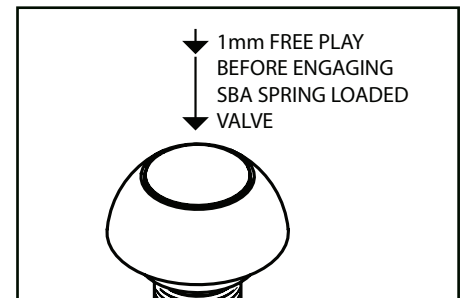


IMAGE 03

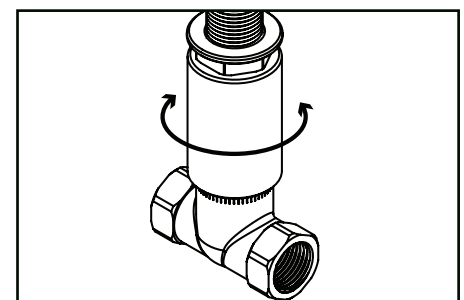


IMAGE 04

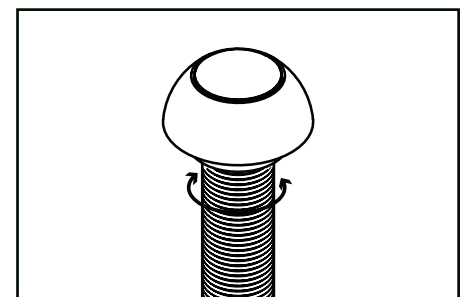


IMAGE 05

# INSTALLATION

9. Fix the All-Thread in place by tightening the grub screw (12) on the side of the Connector Socket.
10. Connect water supply to the inlet of the Body, and outlet line to the outlet side of the Body. Note the arrow marked on the Body, showing the direction of water flow.  
It is recommended that union type fittings are used for connection to the Body, for servicing and maintenance in future.

# TROUBLESHOOTING

PROBLEM	CAUSE	RECTIFICATION
Water runs constantly from outlet	Connector Socket is screwed in too far	Adjust Connector Socket. See Installation Step 8.
Water leaking from outlet	Connector Socket incorrectly adjusted	Adjust Connector Socket. See Installation Step 8.
Water dripping and does not shut off	Debris fouling ball seating washer or stainless steel ball	Dismantle SBA and clean
	SBA ball seating washer is damaged or spring is broken	Replace SBA components using spare part kit (BUB289) or replace SBA (BUB260L)
Button feels loose	Connector Socket incorrectly adjusted	Adjust Connector Socket. See Installation Step 8.
Button sticks	SBA spindle / piston needs re-greasing	Re-grease SBA spindle / piston
Button is hard to press Spring action does not move	Connector Socket incorrectly adjusted	Adjust Connector Socket. See Installation Step 8.
	SBA spindle / piston is seized	Clean piston and piston o-rings, and regrease. Use spare part kit BUB289 (See service and maintenance)
Water discharge from top of dome/ SBA	Piston O-rings are worn	Replace O-rings using spare part kit BUB289. Regrease piston (See service and maintenance.)
Outlet water stream too low or too high	Water supply conditions have changed or are fluctuating.	Check water supply pressure.
	Incorrect flow adjustment	Adjust flow on outlet, or install flow regulator

# SERVICE AND MAINTENANCE

It is recommended that the spring action be periodically serviced. As a guide, every 6 months the spindle / piston should be cleaned and re-greased, and the Push Button checked for correct operation. The servicing interval will vary depending on the frequency of use of the product, water quality and the general environment.

If the components inside the SBA are worn or damaged, replace the SBA or use the service kit to replace components.

## ACCESSING THE SBA SPRING LOADED VALVE

Disconnect water inlet and outlet connected to the Body (13).

Loosen Grub Screw on Connector Socket (10) for the Body, then unscrew Body / SBA.

## CLEANING AND LUBRICATING THE SPINDLE

The spring action can be maintained by simply cleaning and lubricating the spindle (piston) using a siliconbased lubricant approved for potable water.

1. Pull out the piston (the top part) of the SBA and wipe off any excess grease. SEE IMAGE 06
2. Clean the two small o-rings. Replace if necessary, and re-grease them.
3. Push the piston back into the SBA.

## SERVICING THE SBA

1. Pull the piston assembly out from the SBA and remove the 2 piston o-rings. SEE IMAGE 06.
2. Use a spanner to unscrew bottom inlet port, remove spring and stainless steel ball in the port.
3. Insert a small screw driver in centre hole of the ball seating washer and remove the ball seating washer by levering it out.
4. Clean all brass and chrome components. Remove any debris or scale, especially on the piston, spindle and in the dome. Use a diluted

solution of CLR for cleaning if necessary. Check all brass components for wear or damage.

5. Lightly grease the two small piston o-rings with a silicon based, potable water approved grease (e.g. Hydroseal Tap Lubricant or Molykote111) and fit the two o-rings to the piston.
6. Now reassemble the SBA with new components from Service Kit. Place the ball seating washer, ball and spring back in the bottom inlet port, and tighten up the bottom inlet port to the SBA. Refit the seat o-ring and seating washer. Push the piston into the SBA.

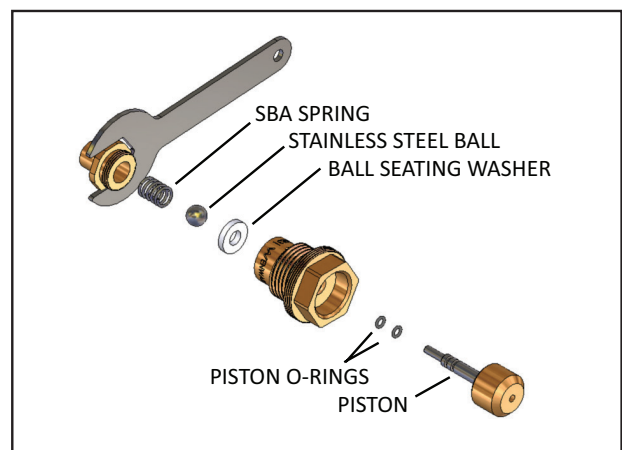


IMAGE 06

## CLEANING INSTRUCTIONS

Enware Product should be cleaned with a soft damp cloth using only mild liquid detergent or soap and water. Do not use cleaning agents containing a corrosive acid, scouring agent or solvent chemicals.

Do not use cream cleaners, as they are abrasive. Epoxy coated surfaces should only be cleaned with a cloth and clear water or mild detergent. Use of unsuitable cleaning agents may damage the surface. Any damage caused in this way will not be covered by warranty.

If re-greasing spindles, always use a Silicon-based potable water approved lubricant such as Hydroseal 'O' Ring Lubricant or Molykote 111 silicone based grease.

Enware Australia Pty Limited (ACN 003 988 314) (“we” or “us”) warrants that this product (also referred to as “our goods”) will be free from all defects in materials and workmanship for 12 months from the date of purchase. Our liability under this warranty is limited at our option to the repair or replacement of the defective product or part, the cost of repair of the defective product or part or the supply of an equivalent product or part, in each case if we are satisfied the loss or damage was due to a defect in the materials or workmanship of the product or part. All products must be installed in accordance with the manufacturer’s instructions, the PCA, and AS/NZS3500 including any other applicable regulatory requirements.

## making a claim

To make a claim under this warranty you must notify us in writing within 7 days of any alleged defect in the product coming to your attention, provide us with proof of your purchase of the product and have completed the Online Product Service and Warranty Form available on website [www.enware.com.au](http://www.enware.com.au).

All notifications and accompanying forms must be sent to us marked for the attention of the Enware Australia Pty Limited, 9 Endeavour Road, Caringbah NSW 2229. We can also be contacted by telephone (1300 369 273) or by email ([info@enware.com.au](mailto:info@enware.com.au)).

Your costs in making a claim under this warranty, including all freight, collection and delivery costs, are to be borne and paid by you. We also reserve the right at our cost

to inspect any alleged defect in the product wherever it is located or installed or on our premises.

## exceptions

This warranty does not apply in respect of any damage or loss due to or arising from:

- a) Failure by you or any other person to follow any instructions for use (including instructions and directions relating to the handling, storage, installation, fitting, connection, adjustment or repair of the product) published or provided by us;
- b) Failure by you or any other person responsible for the fitting, installation or other work on the product to follow or conform to applicable laws, standards and codes (including the AS/NZ 3500 set of Standards, all applicable State and Territory Plumbing Codes, the Plumbing Code of Australia and directions and requirements of local and other statutory authorities); or
- c) Any act or circumstance beyond our control including faulty installation or connection, accident, abnormal use, acts of God, damage to buildings, other structures or infrastructure and loss or damage during product transit or transportation.

## other conditions

Except as provided or referred to in this document, we accept no other or further liability for any damages or loss (including indirect, consequential or economic loss) and whether arising in contract, tort or otherwise. Any benefits available to you under this warranty are in addition to any non-excludable rights or remedies you may have under applicable legislation, including as a “consumer” under the Australian Consumer Law. To that extent you need to be aware that: Our goods come with guarantees that cannot be excluded under the Australian Consumer Law. You are entitled to a replacement or refund for a major failure and for compensation for any other reasonably foreseeable loss or damage. You are also entitled to have the goods repaired or replaced if the goods fail to be of acceptable quality and the failure does not amount to a major failure.

**ADDRESS:** 9 Endeavour Road, Caringbah NSW 2229 Australia

**POSTAL ADDRESS:** P.O. Box 2545, Taren Point NSW 2229 Australia

**PHONE:** 61 2 8536 4000 **FAX:** 61 2 8556 4066

**1300 369 273 [AUS] [WWW.ENWARE.COM.AU](http://WWW.ENWARE.COM.AU) [INFO@ENWARE.COM.AU](mailto:INFO@ENWARE.COM.AU)**

ABN 23 003 988 314

