

# Detention Recess Adaptor

## DET608

The water efficient Detention tapware series have been designed to provide a high level of security with the inclusion of vandal resistant features. The Detention range is constructed from dezincification resistant (DR) brass.

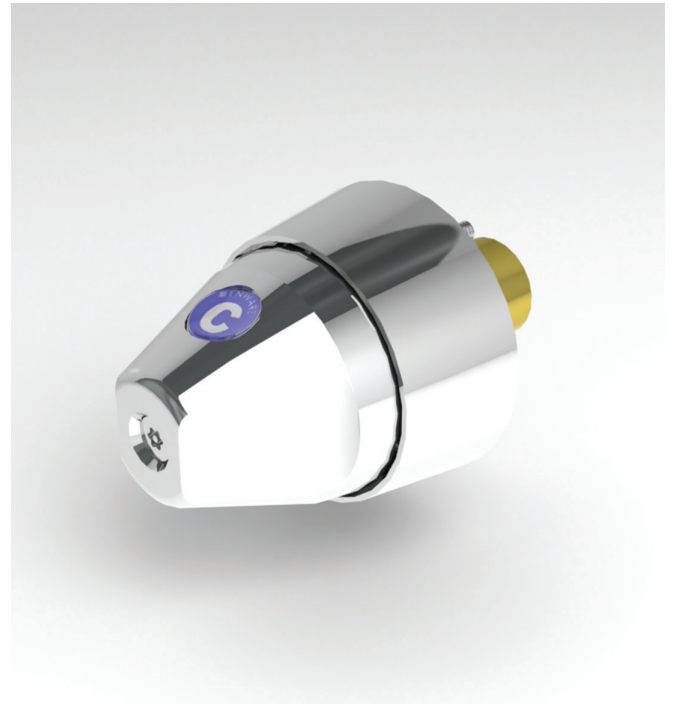
Incorporated is a smooth clean line chrome plated finish, which eliminates horizontal surfaces. The conical handle utilises a ceramic disc quarter turn valve. An anti rotation pin is incorporated to inhibit tampering.

Features:

- Quarter turn ceramic disc
- Anti-ligature design
- Identification buttons available in Cold, Warm or Hot to suit application
- Watermark Licensed to AS/NZS 3718

### Product Codes

|                     |   |
|---------------------|---|
| <b>DET608</b>       | Detention Recess Adaptor Quarter Turn Ceramic Disc                        |
| <b>DET608-15EXT</b> | Detention Recess Adaptor Quarter Turn Ceramic Disc with 15mm extended SBA |



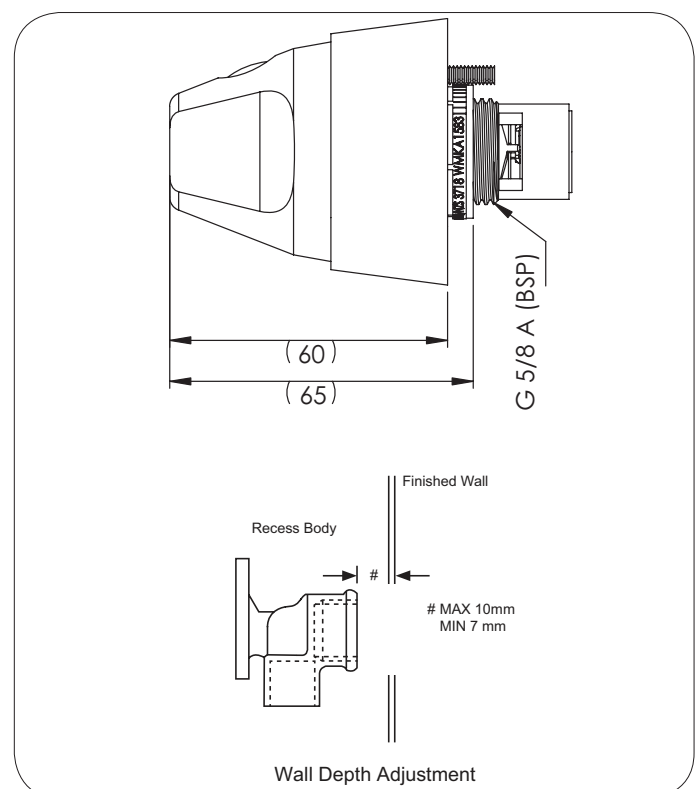
### Technical Information

|                              |                     |
|------------------------------|---------------------|
| Working Pressure Range       | 50-800kPa           |
| Ceramic Disc                 | 500kPa Max (PCA)*   |
| Maximum Working Temperature* | Ceramic Disc - 85°C |

\*Enware products are to be installed in accordance with the Plumbing Code of Australia and AS/NZS3500.

NOTE: Enware Australia advises:

1. Due to ongoing Research and Development, specifications may change without notice.
2. Component specifications may change on some export models.
3. Refer to Warranty Statement for Warranty details [www.enware.com.au/warranty](http://www.enware.com.au/warranty)



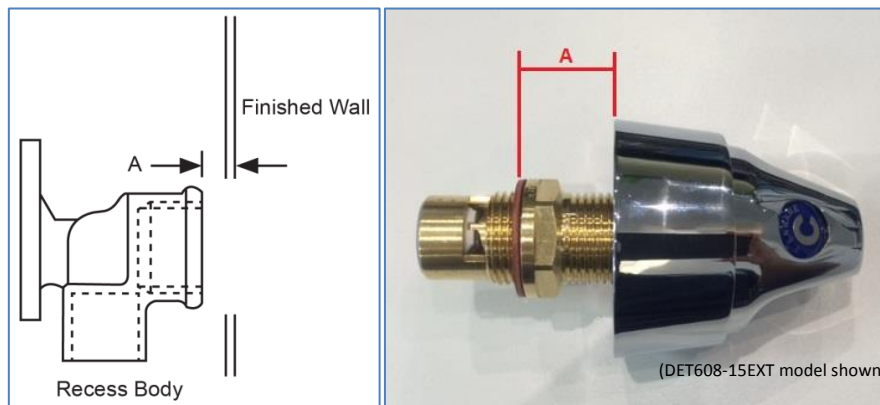
Version: DEC13

Call 1300 369 273  
[www.enware.com](http://www.enware.com)

Enware Australia Pty Limited  
 9 Endeavour Rd Caringbah NSW 2229 Australia  
 Ph: +61 2 8556 4000 Fax: +61 2 8556 4055

  
 installing confidence

## DET608 Wall Depth Adjustment



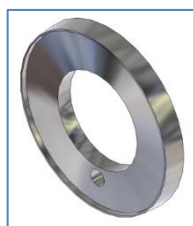
To choose the correct Enware product, firstly find out required wall depth dimension A\*.  
 Order DET608 or DET608-15EXT, together with DET005 or DET015 Trouble Dome if required. (Refer to table below.)  
 Wall depths greater than 22 mm will be a special order (contact Enware).

| Recess Wall Depth* (A) | Product Code                                       | Trouble Dome Required | Notes   |
|------------------------|--|-----------------------|---|
| -3 - 0 mm              | DET608   | DET015                | SBA code <b>DET382</b>  |
| 2 - 5 mm               | DET608   | DET005                | SBA code <b>DET382</b>  |
| 7 - 10 mm              | DET608   | None                  | SBA code <b>DET382</b>  |
| 9 - 13mm               | DET608-15EXT                                       | DET015                | SBA code <b>DET383</b>  |
| 13.5 - 17.5mm          | DET608-15EXT                                       | DET005                |   |
| 18 - 22 mm             | DET608-15EXT                                       | None                  |   |
| 24 - 28 mm             | DET608-15EXT with<br>891401 (HOS384RTC)<br>spindle |                       | Special Order –<br>contact Enware.<br>SBA code <b>HOS384RTC</b> |
| 27 - 32mm              | DET608-15EXT with<br>891392 (HOS385RTC)<br>spindle |                       | Special Order –<br>contact Enware.<br>SBA code <b>HOS385RTC</b> |

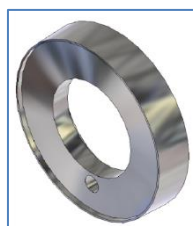
\* Recess wall depth is the distance from finished wall to the face of tap body in wall



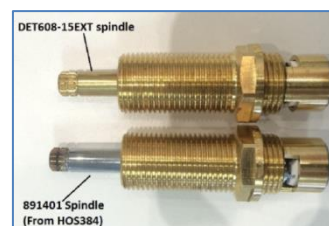
DET608



DET005



DET015



SPECIAL SPINDLE