



# electronic tapware

ADVANCED TECHNOLOGY  
HYGIENIC NO-TOUCH SOLUTION  
RELIABLE PERFORMANCE  
VANDAL RESISTANT

- Electronic Tapware
- Enmatic Series

# electronic tapware

Our touch-free tapware solutions combine advanced electronic technology with stylish European design, thanks to our Scandinavian partner, Oras. The range is reliable, environmentally responsible and user-friendly, making it a top performer in demanding applications.

## FEATURES AND BENEFITS ACROSS THE RANGE, INCLUDE:

- Auto-focus infra-red sensing technology with triangulation for more consistent, reliable operation
- Improved user friendliness with Intelligent Activation and After-Flow technology
- Low power consumption
- Vandal resistant dual point fixings
- Electronics have IP67 rated protection against water and humidity
- Single temperature and mixing available
- Mains and battery models.



Enware Tapware is manufactured to the exacting WaterMark standard AS/NZS3718 and AS4020.

## oras touch-free tapware range

- **Cubista Series Sensor Tap with temperature adjuster**
- **Vega Series Sensor Tap with optional temperature adjuster**
- **Viva Series Sensor Tap with optional temperature adjuster**
- **Electra Series Sensor Tap with mixed temperature control**
- **Electra Series Sensor Tap with single temperature control**
- **Electra Goose Neck Series — sensor tap**
- **Endura Sensor Activated Basin Tap**

enware-oras  
advanced  
electronic  
design  
and engineering

## water efficiency



WELS 6 Star (5.5lpm) water efficiency rating supplied as standard.

**ENWARE**  
installing confidence



## cubista series sensor tap with optional temperature adjuster

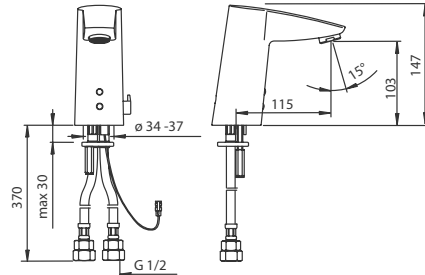
- Created by leading Finnish designer, Kirsi Svärd
- Geometric shape inspired by Cubist art
- High quality and easy to use
- Auto-focus sensor technology
- Temperature adjustment for ultimate user comfort and control

Order Code:

**ENM6450 - Battery**

**ENM6420 - Mains**

WELS 6 Star (5.5lpm) water efficiency rating supplied as standard.



G

## vega series sensor tap with optional temperature adjuster

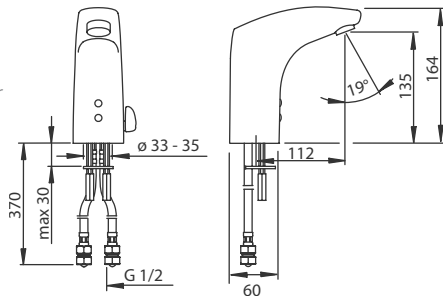
- Auto-focus sensor technology
- Impulse controlled pilot valve
- Contemporary, easy-to-clean design
- Single or mixed temperature options

Order Code:

**ENM6222 - Mains**

**ENM6250 - Battery**

WELS 6 Star (5.5lpm) water efficiency rating supplied as standard.



## viva series sensor tap with optional temperature adjuster

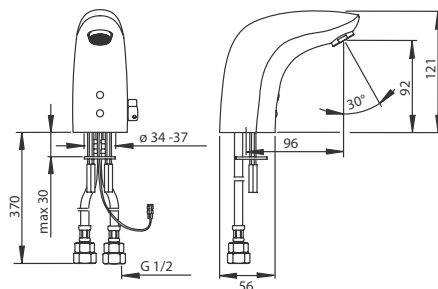
- Auto-focus sensor technology
- Designed to withstand high demand applications
- Vandal resistant dual point fixings
- Single or mixed temperature options

Order Code:

**ENM6120 - Mains**

**ENM6150 - Battery**

WELS 6 Star (5.5lpm) water efficiency rating supplied as standard.



electronic tapware

## electra goose neck sensor tap with mixed temperature control — 170mm spout

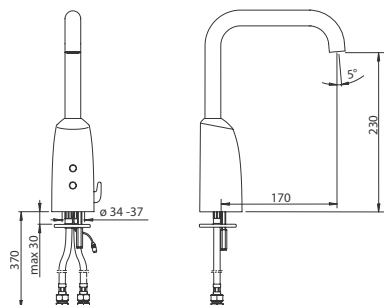
- Practical European design and engineering
- Auto-focus sensor technology
- Ideal for use in health applications
- Single or mixed temperature options
- Durable and easy-to-use

**Order Code:**

**ENM6323 - Mains**

**ENM6353 - Battery**

WELS 6 Star (5.5lpm) water efficiency rating supplied as standard.



## electra goose neck sensor tap for single temperature only — 170mm spout

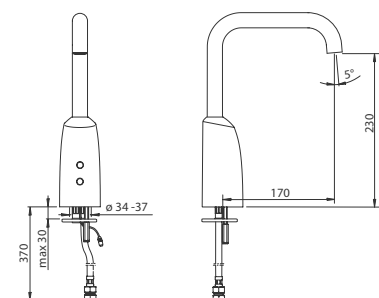
- Practical European design and engineering
- Auto-focus sensor technology
- Ideal for use in health applications
- Single or mixed temperature options
- Durable and easy-to-use

**Order Code:**

**ENM6320 - Mains**

**ENM6350 - Battery**

WELS 6 Star (5.5lpm) water efficiency rating supplied as standard.



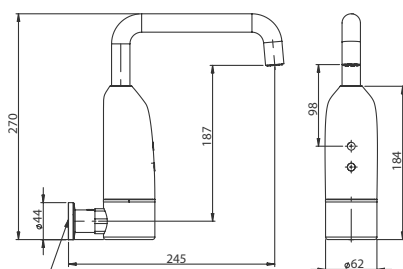
## electra wall mounted goose neck sensor tap — single temperature

- Practical European design and engineering
- Auto-focus sensor technology
- Ideal for use in health applications
- Single or mixed temperature options
- Durable and easy-to-use

**Order Code:**

**ENM6550 - Battery**

WELS 6 Star (5.5lpm) water efficiency rating supplied as standard.

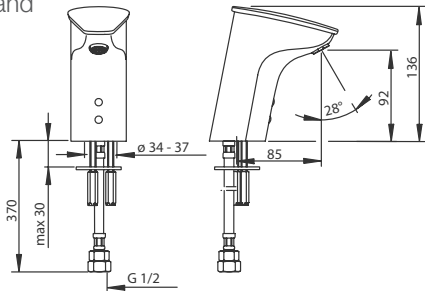


endura sensor activated basin tap

- Auto-focus sensor technology
- Designed for heavy use public washroom applications
- Vandal resistant dual point fixings
- Self-contained unit to improve protection, installation and maintenance
- Single temperature tap

Order Code:  
**ENM6050 - Battery**

WELS 6 Star (5.5lpm) water efficiency rating supplied as standard.



G

technical information

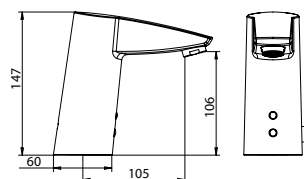
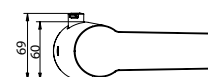
Connection	3/8" & 1/2" BSP Flexi Connector
Recommended Working Pressure	100–500kPa* (minimum 50kPa)
Maximum Static Pressure	800kPa*
Maximum Operating Temperature**	70°C*
Sensor Range	Optimally Preset using Auto-Focus technology
Mains Powered	12V transformer with 2m lead   Input:100-240V~50/60Hz Output:+12V DC 1000mA
Battery Powered	6V Lithium 2CR5 battery   Battery life guide: 4 ± 1 years
Protection Class	IP 67
Max Flow Period	2 Minutes

\*Enware products are to be installed in accordance with AS/NZS3500. \*\*Heated Water Supply AS/NZS 3500.4: For all sanitary fixtures used primarily for personal hygiene purposes are to deliver heated water not exceeding: a) 45°C for early childhood centres, primary and secondary schools and nursing homes or similar facilities for young, aged care, sick people with disabilities b) 50°C in all other buildings.



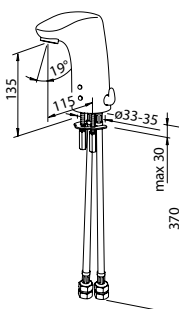
## Enmatic Cubista Series Sensor Activated Basin Tap with Temperature Adjuster

ENM6420	6 Star WELS Rating (5.5lpm) — Mains Powered
ENM6450	6 Star WELS Rating (5.5lpm) — Battery Operated



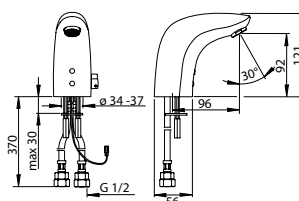
## Enware-Oras Vega Series Sensor Activated Basin Tap with optional Temperature Adjuster

ENM6222	6 Star WELS Rating (5.5lpm) — Mains Powered
ENM6222-6C	Cold Water Only — 6 Star WELS Rating (3lpm) — Mains Powered
ENM6250	6 Star WELS Rating (5.5lpm) — Battery Operated
ENM6250-6C	Cold Water Only — 6 Star WELS Rating (3lpm) — Battery Operated



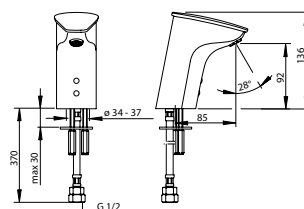
## Enware-Oras Viva Series Sensor Activated Basin Tap with optional Temperature Adjuster

ENM6120	6 Star WELS Rating (5.5lpm) — Mains Powered
ENM6120-6C	Cold Water Only — 6 Star WELS Rating (3lpm) — Mains Powered
ENM6150	6 Star WELS Rating (5.5lpm) — Battery Operated
ENM6150-6C	Cold Water Only — 6 Star WELS Rating (3lpm) — Battery Operated



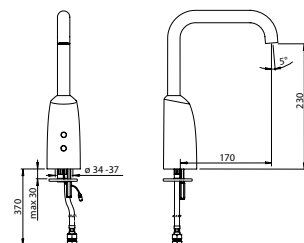
## Enware-Oras Endura Sensor Activated Basin Tap

ENM6050	6 Star WELS Rating (5.5lpm) — Battery Operated
ENM6050-6C	Cold Water Only — 6 Star WELS Rating (3lpm) — Battery Operated



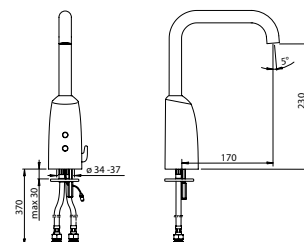
## Enware-Oras Electra Goose Neck Sensor Tap Single Temperature — 170mm Reach

ENM6320	6 Star WELS Rating (5.5lpm) — Mains Powered
ENM6320-6C	Cold Water Only — 6 Star WELS Rating (3lpm) — Mains Powered
ENM6350	6 Star WELS Rating (5.5lpm) — Battery Operated
ENM6350-6C	Cold Water Only — 6 Star WELS Rating (3lpm) — Battery Operated



## Enware-Oras Electra Goose Neck Sensor Tap with Mixed Temperature Control — 170mm Reach

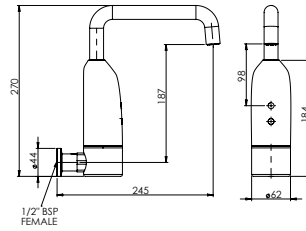
ENM6323	6 Star WELS Rating (5.5lpm) — Mains Powered
ENM6353	6 Star WELS Rating (5.5lpm) — Battery Operated



## Enware-Oras Electra Wall Mounted Goose Neck Sensor Tap — Single Temperature

ENM6550

6 Star WELS Rating (5.5lpm)  
— Battery Operated



## Enware-Oras Electra/Endura/Viva/Vega/Cubista Series Spare Parts

ENMS200	Aerator 6l/m with Casing to suit ENM6120/6150/6450
ENMS201	Aerator 1l/m with Casing to suit ENM6050 Only
ENMS203	Nipple with Filter for ENM6050 Only
ENMS204	6V Lithium battery
ENMS205	Battery Casing for ENM6150/6250/6350/6351/6450 with battery
ENMS206	Battery Holder for ENM6050 with battery
ATMS625	Solenoid Replacement
ENMS208	Sensor for ENM6050 Only
ENMS209	Sensor for ENM6120/6222 Only
ENMS210	Sensor for ENM6150 Only
ENMS211	Sensor for ENM6450 Only
ENMS212	Membrane Ring to Suit Oras Solenoid
ENMS213	Non Return Valve with Strainer for ENM6120/6150/6450
ENMS214	Strainer to suit Oras Electronics
ENMS215	Temperature Control Handle for ENM6120/6150
ENMS216	Temperature Control Handle Casing for ENM6450 Only
ENMS217	Temperature Regulator for Oras ENM6222/6250/6320/6321/6350/6351/6450
ENMS218	Gasket for Oras ENM6222/6250/6320/6321/6350/6351/6450
ENMS219	Mixing Plug for ENM6120/6150
ENMS220	Aerator with Key to suit ENM6222/6250
ENMS221	Aerator 6 l/m with Casing to suit ENM6320/6321/6350/6351
ENMS222	Temperature Control Handle Casing for ENM6222/6250/6320/6321/6350/6351
ENMS223	Spout to suit ENM6320/6350
ENMS224	Spout to suit ENM6321/6351
ENMS225	Filler Drawing Pin to suit ENM6222/6250
ENMS226	Sensor for ENM6250 Only
ENMS227	Sensor for ENM6350/6351 Only
ENMS228	Sensor for ENM6320/6321 Only
ENMS230	Transformer 12V 4.5 metre
ENMS231	Transformer 12V 2.0 metre



# enmatic series

The Enmatic range of Wall Taps includes Sensor Activated On-Demand, Touch Activated Time Flow or Wave On — Wave Off systems.

The Enmatic Wave On — Wave Off range combines the hygiene of no touch operation with greater control for the user to shut off when water flow is no longer required.

Time Flow and Sensor Activations feature hygienic hands free shut-off with the advantage of reducing water wastage through on demand or controlled time flow.

- 24V mains powered
- Controlled by either infrared sensor or piezo touch button technology
- Adjustable timing settings on touch button models



**WaterMark**  
AS/NZS 3718 WMKA 1583  
SAI Global

Enware Tapware is manufactured to the exacting WaterMark standard AS/NZS3718 and AS4020.

## enmatic series tapware

- Enmatic Wall Mounted Sensor Activated Time Flow
- Enmatic Wall Mounted Touch Button Time Flow
- Enmatic Wall Mounted Sensor Activated Wave-On Wave-Off
- Enmatic Wave On – Wave Off Wall Tap Plastic Sensor Panel
- Enmatic Wave-On Wave-Off Wall Tap Stainless Steel Sensor Panel

enware-oras  
advanced  
electronic  
design  
and engineering

## water efficiency



6 star WELS water efficiency rating supplied as standard.  
Also available in 3 star or 4 star ratings – specify when ordering.



## enmatic wall mounted sensor activated time flow

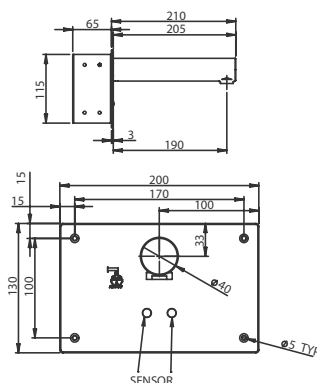
- Default 6 seconds (adjustable to 3, 9 or 12)
- Mains power – 24V
- 205mm reach spout

**Order Code:**

**ENM5071-205**

5 star (6lpm) water efficiency rating supplied as standard.

Also available in 3 star (9.5lpm), 4 star (8lpm) and 6 star (5.6lpm) ratings.



## enmatic wall mounted touch button time flow

- Default 6 seconds (programmable to 12 or 18 seconds)
- Mains power – 24V
- 205mm or 250mm reach spout options

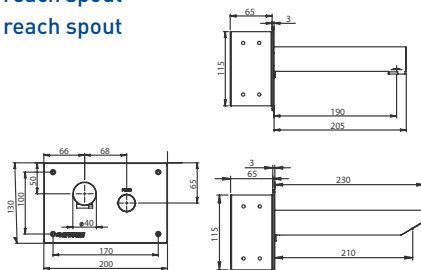
**Order Code:**

**ENM5073-205 - 205mm reach spout**

**ENM5073-250 - 250mm reach spout**

5 star (6lpm) water efficiency rating supplied as standard.

Also available in 3 star (9.5lpm), 4 star (8lpm) and 6 star (5.6lpm) ratings.



## enmatic wall mounted sensor activated wave-on wave-off

- 45 second timed out (if not waved off)
- Mains power – 24V
- 205mm or 250mm reach spout options

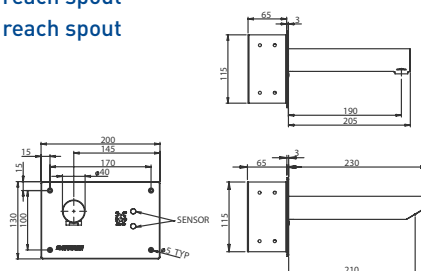
**Order Code:**

**ENM5072-205 - 205mm reach spout**

**ENM5072-250 - 250mm reach spout**

5 star (6lpm) water efficiency rating supplied as standard.

Also available in 3 star (9.5lpm), 4 star (8lpm) and 6 star (5.6lpm) ratings.



G

electronic tapware

## enmatic wave-on wave-off wall tap stainless steel sensor panel

Supplied complete with:

- 150mm fixed wall outlet SP201 (options available)
- 3/8" solenoid valve
- 24V AC power pack with 2m lead
- Stainless Steel sensor panel and mountings

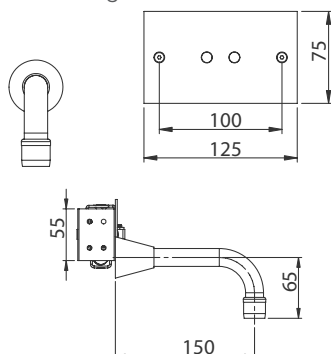
Order Code:

**EMW803 - Wave-On Wave-Off**  
(60 second max flow)

**EMW804 - Wave-On 6 seconds**  
time flow (auto shut-off)

5 star (6lpm) water  
efficiency rating supplied  
as standard.

Also available in 3 star  
(9.5lpm), 4 star (8lpm)  
and 6 star (5.6lpm) ratings.



Also available:

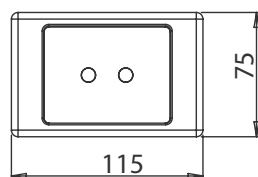
### PLASTIC SENSOR PANEL

Supplied complete with:

- Plastic sensor panel fascia.

Order Code:

**EMW802 - Wave-On Wave-Off**  
(60 second max flow time)



## technical information

Inlet Connection	15mm (1/2") BSP
Minimum-Maximum Working Pressure (AS/NZS 3500)*	50-500kPa*
Maximum Static Pressure	800kPa
Flow Rate:	6 Star (6lpm) water efficiency rating supplied standard. 3 star (9.5lpm) or 4 star (8lpm) WELS ratings available on request.
Maximum Temperature	70°C*
Sensor Range	Approx. 170mm
Time Flow Specifications ENM5071	Default flow time of 3, 6, 9 or 12 seconds flow time adjustment options. (supplied set at 6 sec)
Wave-On Wave-Off Specifications ENM5072	45 seconds maximum run time if not waved off by user
Power Supply	24V AC

\*Enware products are to be installed in accordance with AS/NZS3500. \*\*Heated Water Supply AS/NZS 3500.4: For all sanitary fixtures used primarily for personal hygiene purposes are to deliver heated water not exceeding: a) 45°C for early childhood centres, primary and secondary schools and nursing homes or similar facilities for young, aged care, sick people with disabilities b) 50°C in all other buildings.

### RELATED PRODUCTS

Spring Action Tapware — Page 64

Oras Sensor Tapware — Page 240

Knee Operated and Foot Operated Tapware — Page 159

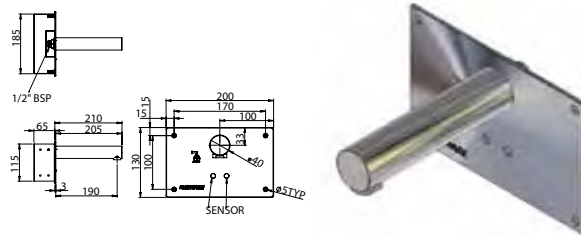
Basins — Page 330

Outlets and Showers — Page 207

### Enmatic 5000 Series Wall Mounted Sensor Activated Time Flow — Mains Powered (Includes Power Pack, Solenoid and 1.8m Connection Cables)

ENM5071-205

205mm Spout-190mm to centre of outlet  
— Default 6 seconds (3, 9, 12 Adjustable)



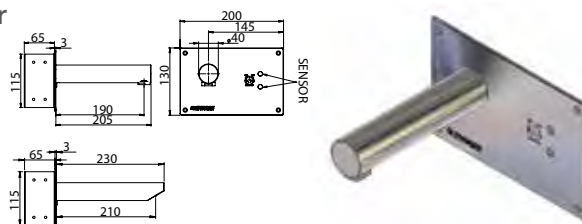
### Enmatic 5000 Series Wall Mounted Sensor Activated Wave-On Wave-Off — Mains Powered (Includes Power Pack, Solenoid and 1.8m Connection Cables)

ENM5072-205

205mm Spout-190mm to centre of outlet  
— 45 second timed out (if not waved off)

ENM5072-250

250mm Spout-235 to centre of outlet  
— 45 second timed out (if not waved off)



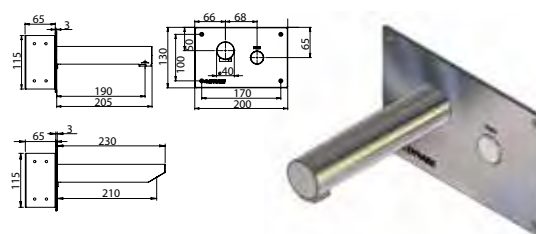
### Enmatic 5000 Series Wall Mounted Touch Button Time Flow — Mains Powered (Includes Power Pack, Solenoid and 1.8m Connection Cables)

ENM5073-205

205mm Spout-190mm to centre of outlet  
— Default 15 Seconds (Fully programmable)

ENM5073-250

250mm Spout-235mm to centre of outlet  
— Default 15 Seconds (Fully programmable)



### Enmatic Sensor Tap — Wall Mounted Kit with Plastic Sensor — Mains Powered (Includes Power Pack, Solenoid and 1.8m Connection Cables)

EMW802-150

Wave On-Wave Off system 150mm spout length

EMW802-175

Wave On-Wave Off system 175mm spout length

EMW802-200

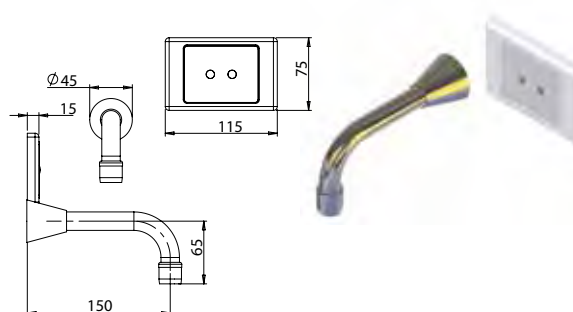
Wave On-Wave Off system 200mm spout length

EMW802-250

Wave On-Wave Off system 250mm spout length

EMW802LO

Wave On-Wave Off system — Less spout



### Enmatic Sensor Tap — Wall Mounted Kit with Stainless Steel Sensor — Mains Powered (Includes Power Pack, Solenoid and 1.8m Connection Cables)

EMW803-150

Wave On-Wave Off system 150mm spout length

EMW803-175

Wave On-Wave Off system 175mm spout length

EMW803-200

Wave On-Wave Off system 200mm spout length

EMW803-250

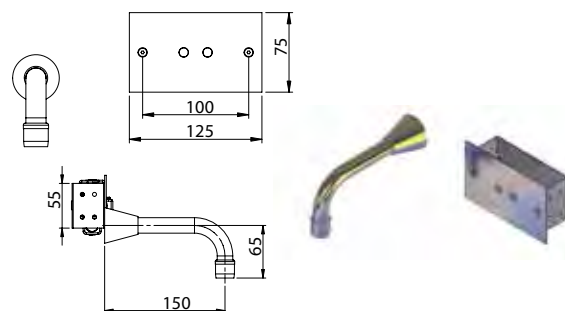
Wave On-Wave Off system 250mm spout length

EMW803LO

Wave On-Wave Off system — Less spout

EMW804

6 Seconds of Flow when Activated  
— 150mm Spout Length



### Spare Parts for EMW802/803/804 Wall Sensor Kits

EMS804	Solenoid Valve 3/8 Inch BSP F&F
EMS805	Transformer — 24V — 1 amp
EMS806	Plastic Sensor Only — Wave On-Wave Off
EMS807	Stainless Steel Sensor Only — Wave On-Wave Off
EMS809	Stainless Steel Sensor Only — 6 Seconds of Flow when Activated
EMS840	2m Extension Lead
EMS841	4m Extension Lead

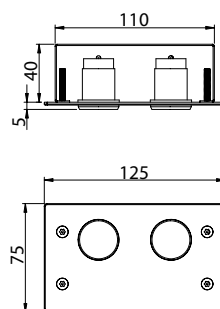
### Enmatic Touch Activated Single Button Control Kit — Wall Mounted

EMD810	To suit Basin Install
EMD811	To suit Shower Install



### Enmatic Touch Activated Dual Button Control Kit — Wall Mounted

EMD820	To suit Basin and Shower Installations
--------	--



### Spare Parts for EMD Touch Activated Control Kits

EMDS800	24V AC — 1 amp — Transformer with 1.8m Lead
EMDS801	2m Extension Lead for EMDS800
EMS811	Touch button — Electronic Programmable Piezo button to suit EMD810/811/820 and ENM5073

### Spare Parts — Stainless Steel Face Plate and Sensor only to suit ENM5072 Models

ENMS133
---------

### Spare Parts — Stainless Steel Face Plate and Sensor only to suit ENM5071 Models

ENMS134
---------