

# FOOD SERVICE PRE RINSE ULTRA RINSE TRIGGER SPRAY

## Installation & Maintenance Instructions

### FS729 PRE RINSE ULTRA RINSE TRIGGER SPRAY



I00052\_Apr 18

Call 1300 369 273  
[www.enware.com.au](http://www.enware.com.au)

Enware Australia Pty Limited  
9 Endeavour Rd Caringbah NSW 2229 Australia  
Ph: +61 2 8556 4000 [info@enware.com.au](mailto:info@enware.com.au)



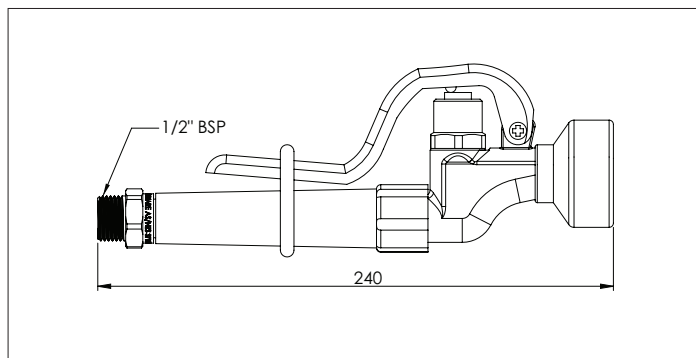
# technical data

Inlet Connection	15mm (1/2" BSP)
Flow Rate - Gun	4 l/minute*
Recommended Working Pressure	500 kPa
Maximum Operating Temperature	85 °C

\*Supplied standard - also available in 2 Star 9.5lpm or 5 Star 6lpm

Enware tapware must be installed in accordance with the provisions of AS/NZS3500 and any relevant local regulations. Installations not complying with AS/NZS3500 may void the product and performance warranty provisions. The performance of Enware AS/NZS 3718 tapware, in many cases, exceeds the plumbing system design requirements of the Plumbing Code of Australia and AS/NZS 3500.

For optimum performance it is recommended that the control valves or taps be turned off when not in use overnight or for long periods. Complete pre-rinse assemblies incorporate a dual check valve for backflow prevention. Lever tapware control incorporate quarter turn non-rising jumper valves.



## installation instructions

Before proceeding with installation ensure all operating & dimensional specifications are suitable for the intended installation. Ensure all supply lines are flushed thoroughly to remove debris prior to the installation of this product. Strainers (40 mesh) are recommended if debris is an ongoing problem. A Pressure reduction valve may be required to comply with recommended maximum supply pressure.

### IMPORTANT This must be read before proceeding with installation

Enware products must be installed in accordance with AS/NZS 3500 – Plumbing and Drainage, the Plumbing Code of Australia as well as imposed Local and State / Territory Legislative requirements and the manufacturer’s instructions.

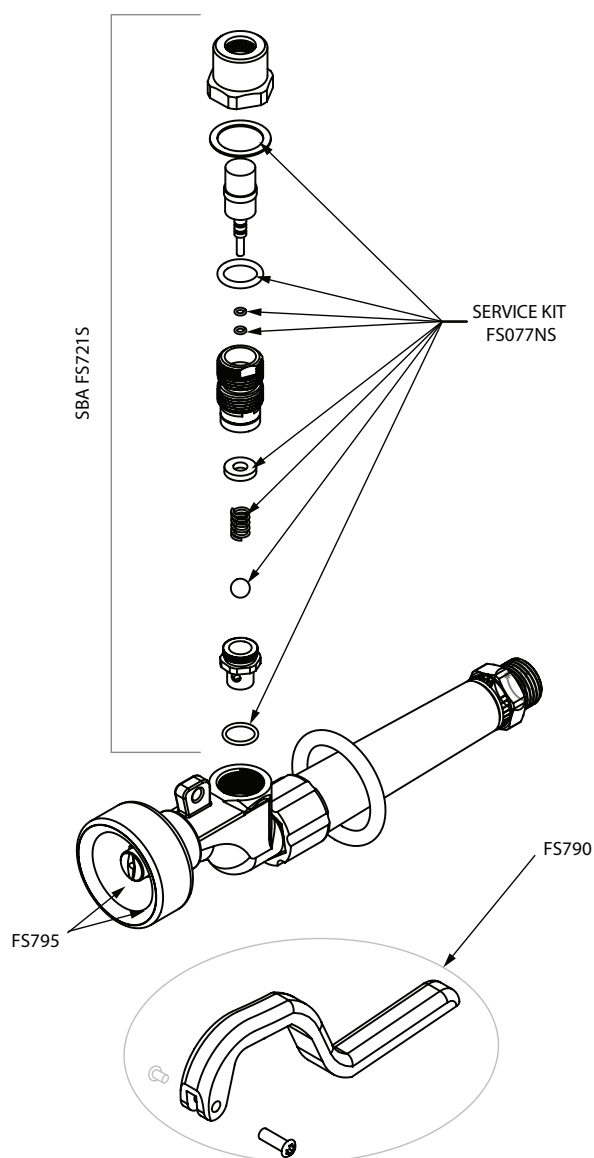
Tools Required: 26mm spanner or adjustable spanner, thread seal tape or equivalent.

1. Turn water supply off at taps. Activate existing trigger spray to help release water in riser. Remove existing trigger spray.
2. Use thread seal tape or an equivalent thread sealing method on the male inlet thread of the trigger spray. There will be a tendency for the trigger spray to unscrew from the hose connector with heavy use. The type of thread sealant selected should be able to withstand such force.
3. Screw the trigger spray into the hose connector. Use two spanners: one located on the hex flats of the hose connector and the other one on the trigger spray flats. Tighten securely.
4. Turn water on and check for leaks and correct operation.

**WARNING:** Hot water will scald. Care must be taken to avoid scalding when using the trigger spray to deliver hot water. Exposed metal sections of the mixer, riser assembly, hose connections and trigger spray may become hot when in use and may cause burn injuries.

When not in use ensure all taps to the pre rinse assembly are turned off. The taps should not be left on when unattended as this maintains pressure to the hose and trigger spray assembly and could result in water damage from flooding if in the unlikely event a hose or trigger spray were to malfunction.

## components



SPARE PARTS	
FS721S	SBA (cartridge)
FS077NS	SBA Service Kit
FS790	Trigger handle and hinge screw set
FS795	Nozzle and guard

# servicing

It is recommended that the trigger spray action be periodically serviced. The maintenance interval will depend on the frequency of use of the product, water quality and the general environment.

Occasionally the handle screws should be checked for tightness and a visual inspection made of all other connections on the assembly including the trigger spray and hose, the wall bracket fixing to the wall and riser to ensure they are secure, and tighten if necessary.

## CLEANING TRIGGER SPRAY

1. Using two (2) phillips head screw drivers, undo the locking screws from the handle and remove handle.
2. Using a 26mm spanner remove cover dome and red fibre washer from spring loaded action. Clean the inside of the cover dome. Use a dilute solution of CLR if necessary. Remove all scale, grease and any other residues.
3. Lightly grease the inside of the dome.
4. Pull out the piston from the SBA (stuffing box assembly) and clean any scale or residues from the spindle and button. Be careful not to damage the o rings.
5. Lightly grease piston o rings and push piston back into SBA.
6. Depress piston to start water flow. Release piston and check for leaks and that the water flow stops. If there is no flow, or water does not stop, refer to the trouble shooting guide. IF the problem persists, service kits or replacement SBA may be required.
7. With the red fibre body washer located over the SBA, screw the cover dome back down onto the SBA.
8. Replace the handle and secure it with the hinge screws.
9. Re-test trigger spray for correct operation.

# care & maintenance

Enware Product should be cleaned with a soft damp cloth using only mild liquid detergent or soap and water. Do not use cleaning agents containing a corrosive acid, scouring agent or solvent chemicals. Do not use cream cleaners, as they are abrasive. Epoxy coated surfaces should only be cleaned with a cloth and clear water or mild detergent. Use of unsuitable cleaning agents may damage the surface.

Any damage caused in this way will not be covered by warranty.

If re greasing spindles always use a silicon based potable water approved lubricant such as Hydroseal 'O' Ring Lubricant or Molykote 111 silicone based grease.

# troubleshooting

Refer to the guide below for specific problems such as a leaking trigger spray or taps. Complete service instructions are supplied with each spare part kit and these should be referred to before disassembling any fitting. Spare part kits should be on hand before any complete service of the tap is undertaken.

PROBLEM	CAUSE	RECTIFICATION
Trigger Spray does not turn off	Debris fouling ball seating washer or stainless steel ball	Dismantle and clean SBA
	Seating washer damaged or spring broken	Replace components using spare part kit or replace SBA
	Piston jammed in open position	Remove dome and piston from SBA. Clean piston assembly and re-grease piston o-rings. Refer to maintenance instructions Replace O rings if necessary.
No flow from trigger spray outlet	Water supply turned off	Turn water on
	Seating o/ring damaged	Replace o/ring using spare part kit or replace SBA
	Debris fouling inlet or outlet ports of SBA	Remove SBA and remove Blockage.
	Rubbish/debris fouling spray outlet	Remove blockage from spray outlet
Water discharge from top of Trigger spray Dome	Piston o/rings worn	Replace o/rings and re-grease spindle with service kit or replace SBA.



**ADDRESS:** 9 Endeavour Road, Caringbah NSW 2229 Australia

**POSTAL ADDRESS:** P.O. Box 2545, Taren Point NSW 2229 Australia

**PHONE:** 61 2 8536 4000      **FAX:** 61 2 8556 4066

**1300 369 273 [AUS] [WWW.ENWARE.COM.AU](http://WWW.ENWARE.COM.AU) [INFO@ENWARE.COM.AU](mailto:INFO@ENWARE.COM.AU)**

ABN 23 003 988 314

