

# BUTTON ACTION BUBBLER

## Installation & Maintenance Instructions

---

**BUB290**  
BUTTON ACTION BUBBLER



I00038\_Dec 17

**Call 1300 369 273**  
**[www.enware.com.au](http://www.enware.com.au)**

Enware Australia Pty Limited  
9 Endeavour Rd Caringbah NSW 2229 Australia  
Ph: +61 2 8556 4000 Fax: +61 2 8556 4055

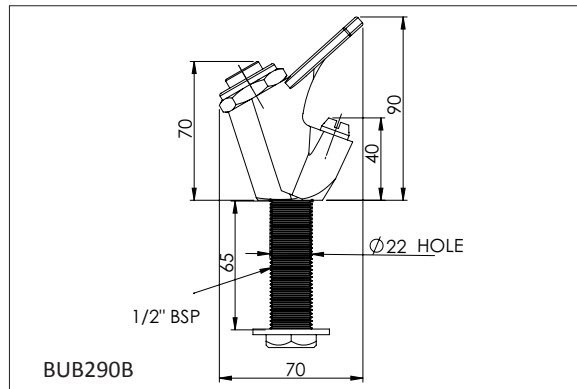
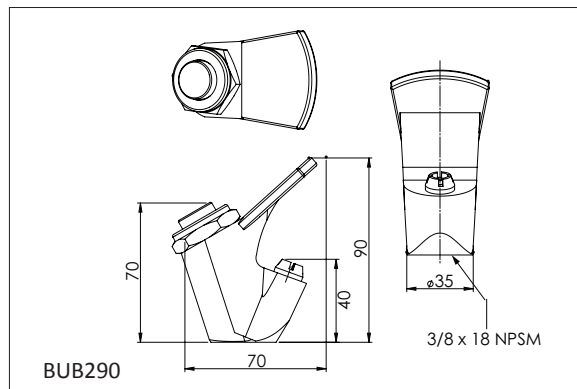


# technical data

## Technical Information

|                               |   |
|-------------------------------|---|
| Inlet Connection              | 3/8"x18 NPSM Female (BUB290)<br>1/2" BSP Male (BUB290B) |
| Recommended Working Pressure  | 100- 500 kPa  |
| Flow Rate                     | 2 l/minute (adjustable)                                 |
| Recommended Temperature Range | 5-30 °C   |

Enware tapware must be installed in accordance with the provisions of AS/NZS3500 and any relevant local regulations. Installations not complying with AS/NZS3500 may void the product and performance warranty provisions. The performance of Enware AS/NZS 3718 tapware, in many cases, exceeds the plumbing system design requirements of the Plumbing Code of Australia and AS/NZS 3500.



# installation compliance

Before proceeding with installation ensure all operating & dimensional specifications are suitable for the intended installation.

Ensure all supply lines are flushed thoroughly to remove debris prior to the installation of this product. Strainers (60 mesh) are recommended if debris is an ongoing problem. A Pressure reduction valve may be required to comply with recommended maximum supply pressure.

### IMPORTANT - This must be read before proceeding with installation

Enware products must be installed in accordance with AS/NZS 3500 – Plumbing and Drainage, the Plumbing Code of Australia as well as imposed Local and State / Territory Legislative requirements and the manufacturers instructions.

The following clauses must be observed for a compliant installation and correct operation of Enware tapware.

### WATER SERVICES

Plumbing Code of Australia:  
Part B1 Cold Water Services

AS / NZS 3500.1-2015 Water Services;

- Section 1.6(a) Facilities for people with Disabilities
- Section 3.3.2 Pressure at outlets (min 50kPa)
- Section 3.3.4 Maximum pressure within buildings (500kPa static)
- Section 3.4 Velocity Requirement (Max 3.0m/s)
- Section 16 Testing and Commissioning; Flushing, Hydrostatic testing, cleaning and disinfection of water services.

# installation instructions

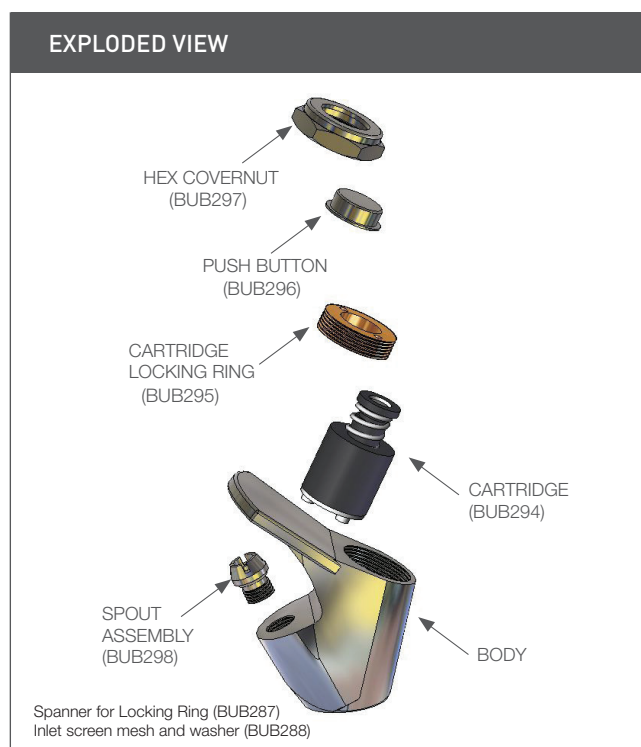
## INSTALLATION

1. The bubbler is supplied fully assembled. To install use a thread sealant tape to seal to the 3/8" BSP male thread connection.
2. Screw the bubbler onto the thread.
3. Turn water on and check for leaks at the inlet connection. Operate bubbler – flow may need to be adjusted to a higher or lower height.

## SETTING WATER STREAM HEIGHT

Operate bubbler to determine if the water stream height is satisfactory. If not:

1. If the water stream needs to be reset the hex cover nut must be unscrewed from the bubbler body using a suitable spanner. The nut and push button can be removed to reveal the top of the spring cartridge and the cartridge locking ring.
2. Using a small flat sided screwdriver locate the flow adjustment screw in the top of the cartridge and while the bubbler is in the fully open position, screw the adjustment screw in to reduce stream height, or out to increase stream height.
3. Replace the push button and hex cover nut and tighten.
4. Re-test bubbler for correct operation.



# service & maintenance

Trouble shooting chart below refers to specific problems and solutions. Service instructions are supplied with spare part kits.

The BUB294 Type 61 cartridge is not serviceable so unless the problem is external to the cartridge and easily identified i.e. debris blocking the inlet, a complete cartridge will be required.

## REPLACING BUBBLER CARTRIDGE

1. Shut off water supply.
2. Using a suitable spanner undo the hex cover nut. Remove the nut and the push button.
3. Using suitable circlip pliers or the Type 61 spanner unscrew the retaining nut. This will allow the cartridge to be removed. Ensure that the bottom sealing washer is removed from the bubbler seat with the cartridge. Set retaining components aside being careful not to lose the smaller parts.
4. Replace with a new cartridge ensuring that the bottom sealing washer is in place and that the cartridge locates correctly into the spigot holes.

5. Screw in retaining nut and tighten.
6. Replace push button and screw in hex cover nut, tighten.
7. Turn water on and test for correct operation.

## REPLACING SPOUT ASSEMBLY

1. Use a suitable flat sided screw driver to remove spout assembly.
2. Replace the outlet with a new Type 61 Spout Assembly Kit (BUB298). Ensure that the internal components of the outlet assembly are correctly located including the sealing o-ring.
3. Tighten with screwdriver and test.

| PROBLEM                                   | CAUSE   | RECTIFICATION   |
|---|---|---|
| Water runs constantly from bubbler outlet | Debris in cartridge                               | Replace cartridge BUB294  |
|   | Cartridge has been damaged                        | Replace cartridge BUB294  |
|   | Seating washer damaged or spring broken           | Install a pressure reduction valve.<br>Replace cartridge BUB294 |
| No flow from bubbler outlet               | Water supply turned off                           | Turn water on   |
|   | Debris fouling inlet or outlet ports of cartridge | Remove blockage   |
|   | Rubbish/debris fouling outlet                     | Remove blockage   |
| Water discharge from top of bubbler       | Cartridge is damaged                              | Replace cartridge BUB294  |



**ADDRESS:** 9 Endeavour Road, Caringbah NSW 2229 Australia

**POSTAL ADDRESS:** P.O. Box 2545, Taren Point NSW 2229 Australia

**PHONE:** 61 2 8536 4000      **FAX:** 61 2 8556 4066

**1300 369 273 [AUS] [WWW.ENWARE.COM.AU](http://WWW.ENWARE.COM.AU) [INFO@ENWARE.COM.AU](mailto:INFO@ENWARE.COM.AU)**

ABN 23 003 988 314

