

ENWARE PULL DOWN EYE WASH

Installation, Operating & Maintenance Instructions

EL486



EL487



Version: Aug 15_100019

Call 1300 369 273
www.enware.com.au/ehs

Enware Australia Pty Limited
9 Endeavour Rd Caringbah NSW 2229 Australia
Ph: +61 2 8556 4000 Fax: +61 2 8556 4055


installing**confidence**

ENWARE PULL DOWN EYE WASH

ENWARE IS AT THE FOREFRONT OF PROACTIVE SAFETY SYSTEMS, EMERGENCY RESPONSE AND ENVIRONMENTAL SOLUTIONS.

The products in Enware's EH&S range are of superior quality and are manufactured utilising advanced technology, design and engineering.

When you choose Enware you also have peace of mind that you have chosen the best in quality and after sales support.

PRODUCT FEATURES

- Aerated outlets
- Chrome plated brass body
- Ball valve style operation
- Isolation valve included
- Includes sign compliant with AS1319

CONTENTS

TECHNICAL INFORMATION	page 2
INSTALLATION COMPLIANCE	page 2
INSTALLATION PROCEDURE - EL486	page 3
INSTALLATION PROCEDURE - EL487	page 4
COMPONENTS EL486	page 5
COMPONENTS EL487	page 5
TROUBLE SHOOTING	page 6
OPERATING, TRAINING & MAINTENANCE	page 6

TECHNICAL INFORMATION

Inlet Connection	½" BSP
Maximum Testing Pressure (static)	1000kPa
Recommended Working Pressure	210kPa
Maximum Working Pressure	500kPa*
Operating Temperature	Tepid

* The performance of Enware AS/NZS 3718 tapware, in many cases, exceeds the plumbing system design requirements of the Plumbing Code of Australia and AS/NZS 3500.

~ Flushing fluid at tepid temperatures shall be delivered - 15.6°C - 37.8°C

INSTALLATION COMPLIANCE

Enware product's must be installed in accordance with AS4775 - Emergency Eyewash and Safety Equipment AS/NZS 3500 - Plumbing and Drainage, the Plumbing Code of Australia as well as imposed Local and State / Territory Legislative requirements and the manufacturers instructions.

The following clauses must be observed for a compliant installation and correct operation of Enware tapware.

Water Services

Plumbing Code of Australia: Part B1 Cold Water Services
AS / NZS 3500.1-2003 Water Services;

- Section 1.6(a) Facilities for people with Disabilities
- Section 3.3.2 Pressure at outlets (min 50kPa)
- Section 3.3.4 Max. pressure within buildings (500kPa)
- Section 3.4 Velocity Requirement (Max 3.0m/s)
- Section 16 Testing and Commissioning; Flushing, Hydrostatic testing, cleaning & disinfection of water services.

Emergency Eyewash and Safety Equipment

AS4775 -2007

- Section 7.1 - Performance of plumbed and self-contained eyewash units
- Appendix D - Installation Requirements
- Section 7.4 - Location
- Section 7.5 - Installation

INSTALLATION PROCEDURE EL486

Before proceeding with installation ensure all operating & dimensional specifications are suitable for the intended installation.

Ensure all supply lines are flushed thoroughly to remove debris prior to the installation of this product. Strainers (60 mesh) are recommended if debris is an ongoing problem. A Pressure reduction valve may be required to comply with recommended maximum supply pressure. If this product is to be used in a low pressure application the correct low pressure/high flow option must be specified.

PREPARATION OF BENCH/SPACE

1. Position eyewash unit so that it is clear of obstructions that prevent its operation - i.e. place the unit where desired on bench and move to "open" position, ensuring that the arm does not hit anything and that the user can reach the unit.
2. The unit must be positioned with the flushing aerators not less than 838mm and no greater than 1143mm from the surface on which the user stands, when in the open position.

INSTALLATION OF MOUNTING INSERT

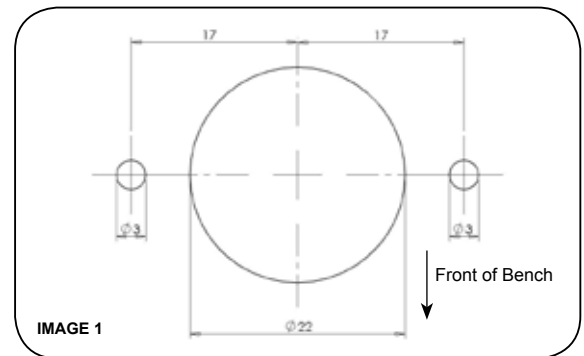
1. When position is decided, drill pattern shown below
Note: check measurements on units prior to drilling - SEE IMAGE 1
2. Ensure that the water supply and isolation valve is turned off.
3. Fit the thread with mounting insert attached through the hole in the bench. **SEE IMAGE 2**
4. Thread on locknut and attach isolation valve to thread (using correct sealing tape)

INSTALLATION OF EYEWASH BODY

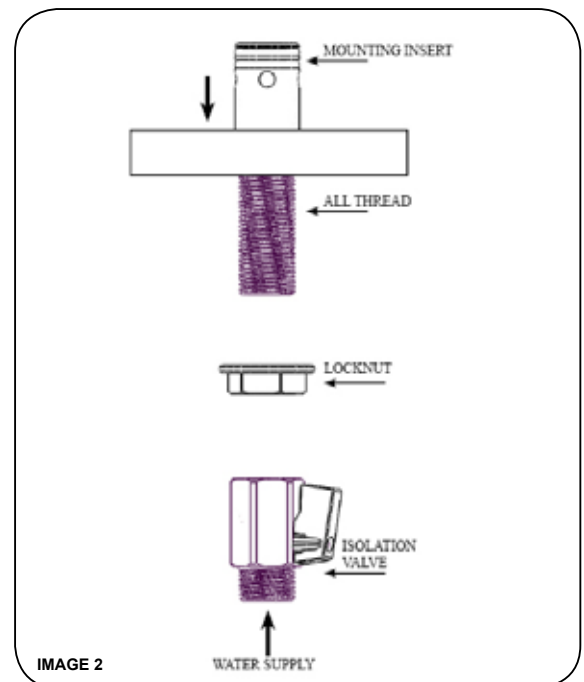
1. Fit the eyewash unit to the pre-drilled holes in the bench. Attach eyewash unit to mounting insert using the 2 cone tipped grub screws supplied.
2. Tighten the locknut until the unit is firmly attached to the bench.

COMMISSIONING THE EYEWASH

1. Ensure all connections are tight and turn on ball valve
2. Pull down the eyewash arm and test that water comes out.
3. Ensure that there are no leaks on any connections.
4. While eyewash is on, use ball valve to adjust the flow of the water until it meets requirements from AS4775 - **See page 2.**



NOTE: Check measurements on unit PRIOR to drilling



INSTALLATION PROCEDURE EL487

Before proceeding with installation ensure all operating & dimensional specifications are suitable for the intended installation.

Ensure all supply lines are flushed thoroughly to remove debris prior to the installation of this product. Strainers (60 mesh) are recommended if debris is an ongoing problem. A Pressure reduction valve may be required to comply with recommended maximum supply pressure. If this product is to be used in a low pressure application the correct low pressure/high flow option must be specified.

PREPARATION OF BENCH/SPACE

1. Position eyewash unit so that it is clear of obstructions that prevent its operation (i.e. place the unit where desired on wall and move to "open" position, ensuring that the arm does not hit anything and that the user can reach the unit).
2. The unit must be positioned with the flushing aerators not less than 838mm and no greater than 1143mm from the surface on which the user stands, when in the open position.

INSTALLATION OF MOUNTING INSERT

1. Ensure that the water supply is turned off and ball valve in the mounting insert is in the off position.
2. When installation location is decided, screw the mounting insert with isolation valve onto the exposed male thread (1/2" BSP) until it bottoms out on wall. Back off mounting insert so that the grub screw divets are horizontal (and vertical). **SEE IMAGE 3** Mark where the locking screw will be positioned and remove mounting insert from thread. **SEE IMAGE 4** (Note: exposed male thread to be maximum 15mm).
3. Drill a 6mm hole for the locking screw in the marked position.
4. Screw the mounting insert back onto the 1/2" BSP thread (using appropriate thread sealing). Screw in the locking screw and ensure the unit feels secure.

INSTALLATION OF EYEWASH BODY

1. Place dress ring over mounting insert with isolation valve.
2. Attach eyewash unit to mounting insert using the 2 cone tipped grub screws supplied.
3. Turn hole in dress flange to access the isolation valve.

COMMISSIONING THE EYEWASH

1. Ensure all connections are tight and turn on ball valve
2. Pull down the eyewash arm and test that water comes out.
3. Ensure that there are no leaks on any connections.
4. While eyewash is on, use ball valve to adjust the flow of the water until it meets requirements from AS4775 - **See page 2.**

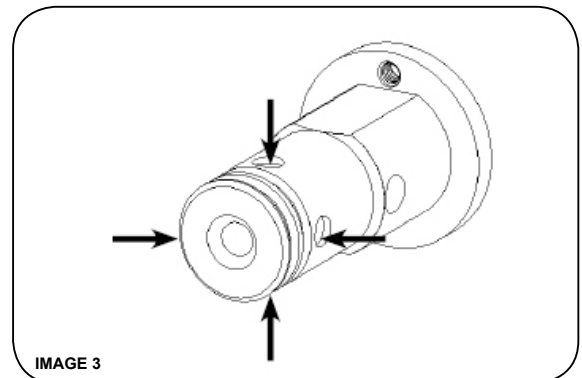


IMAGE 3

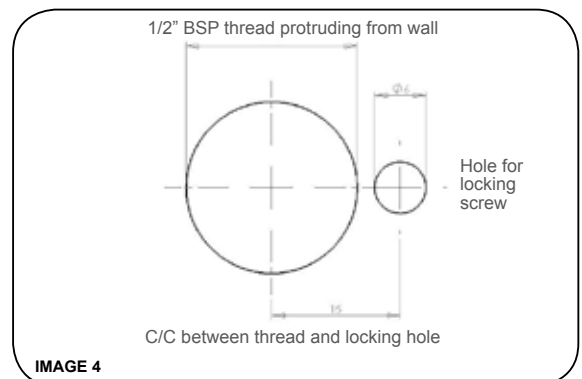


IMAGE 4

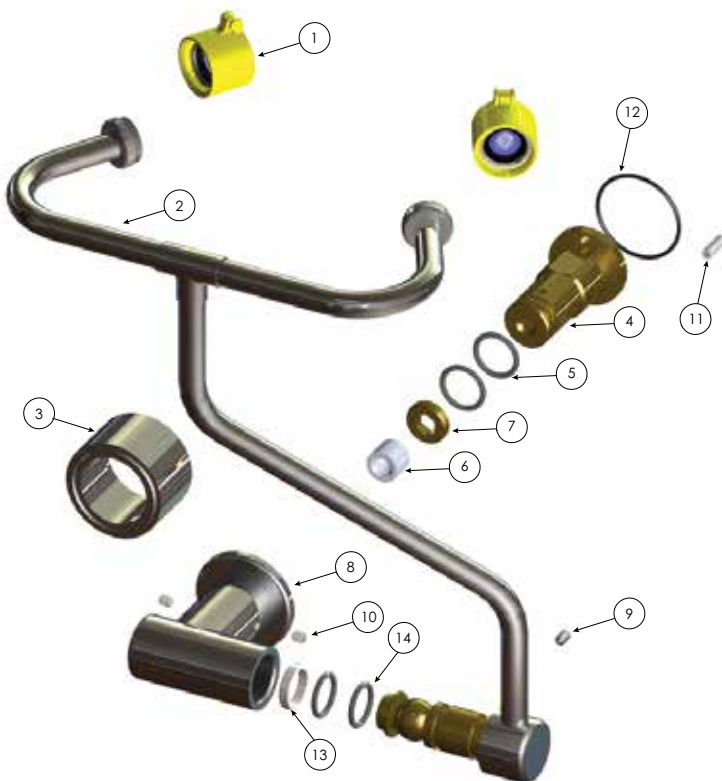
NOTE: position will vary - screw onto wall first.

COMPONENTS EL486



#	Description	Part Number
1	Aerator AV outlets & Eyewash Cover (13Lpm)	790473
2	Pull down eyewash assembly - Bench	881056
3	1/2" BSP Locknut	672051
4	Isolation valve	792557
5	BS116 Oring	672351
6	Mounting insert	
7	1/2" BSP Tail	894556
8	Ball spline seat	693447
9	Locknut, pull down eyewash	894765
10	Pull down eyewash mounting	881055
11	Rolling tip grub screw	673359
12	Cone tipped grub screw M5	673360
13	Wave pin	
14	BS030 Oring	672361
15	Pull down eyewash, ball spline bush	693073
16	BS115 Oring	672362

COMPONENTS EL487



#	Description	Part Number
1	Aerator AV outlets & Eyewash Cover (13Lpm)	790473
2	Pull down eyewash assembly - Wall	881058
3	Dress Flange	880455
4	Mounting Insert with Isolation Valve	
5	BS116 Oring	672351
6	Ball spline seat	693447
7	Locknut, pull down eyewash	894765
8	Pull down eyewash mounting body	881055
9	Rolling tip grub screw	673359
10	Cone tipped grub screw M5	673360
11	M5 locking screw	
12	BS030 Oring	672361
13	Pull down eyewash, ball spline bush	693073
14	BS115 Oring	672362

TROUBLE SHOOTING

PROBLEM	CAUSE	RECTIFICATION
Water runs constantly from outlet	Spline seat not adjusted properly	turn off isolation valve, remove eyewash body and re-tension hex nut to spline seat
	Debris fouling spline seat	Same as above, but remove spline seat and clean before reassembly Note: Spline seat can be removed with M10 x 1.5 bolt
	Pressure is too high	Reduce flow with isolation valve
No flow from fountain outlet	Water supply turned off	Turn water on
	Isolation valve is turned off	Turn on isolation valve
	Rubbish/debris fouling outlet	Remove blockage
Water discharge from between main bodies or below flange	O/rings worn	Replace o/rings and re-grease spindle.
Eyewash stream too low or too high	Water supply conditions have changed or fluctuated	Reset unit heights height by adjusting the isolation valve. A Pressure control valve maybe required

OPERATING, TRAINING & MAINTENANCE

OPERATING AND TRAINING INSTRUCTIONS

1. Instructions for all emergency equipment shall be readily accessible to maintenance and training personnel.
2. Employees who may be exposed to hazardous materials shall be instructed in the location and proper use of emergency shower equipment.

MAINTENANCE AND INSPECTION

The eyewash shall be activated weekly for a period long enough to verify operation and ensure the flushing fluid is available AS4775-2007 (Section 7.3) & ANSI Z358.1-2004 (8.2.4 Supplementary Equipment).

Note: the intent is to ensure that there is a flushing fluid supply at the head of the device and to clear the supply line of any sediment build up that could prevent fluid from being delivered to the head of the device and to minimize microbial contamination due to sitting water.

Hose condition and outlets should also be checked for damage or wear. All eyewash units shall be inspected annually to assure conformance with AS4775-2007 & ANSI 358.1-2004.



installing**confidence**

ADDRESS: 9 Endeavour Road, Caringbah NSW 2229 Australia

POSTAL ADDRESS: P.O. Box 2545, Taren Point NSW 2229 Australia

PHONE: 61 2 8536 4000 **FAX:** 61 2 8556 4066

1300 369 273 (AUS) WWW.ENWARE.COM.AU INFO@ENWARE.COM.AU

