

Emergency Eyewash Wall Mounted Hand Operated

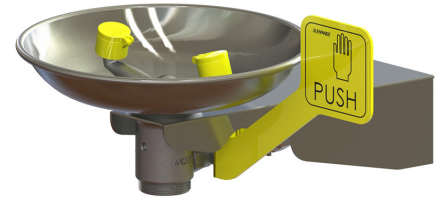
EEE120

Enware's emergency eye/face wash units help to flush contaminants and irritants from eyes and facial area.

Designed and manufactured in Australia. Stainless steel construction provides superior durability and reliability.

FEATURES

- Independently tested to comply with ANSI Z 358.1 and AS/NZS 4775
- Stainless steel bowl, stay-open ball valve and hand actuator
- Push activated eyewash with soft aerated flow and integral auto-open dust covers
- Integral flow volume control
- Eye/face wash features "Vertech™ Technology" where dedicated eyewash and independently angled face wash streams deliver optimum coverage
- Zero velocity apex point provides more comfort and control for effective cleansing of eyes
- High visibility yellow powder coated push handle



ADDITIONAL OPTIONS

- Audio/Visual alarms for alerts
- Flow pressure and proximity switches to activate alarms and lights
- Thermal relief valve removes built-up hot water
- Anti-freeze valve for cold weather climates to help prevent water freezing
- NPT flange connectors
- Custom manufacturing & design
- Signage compliant to AS1319

Product Codes

EEE120 Wall Mounted Eye/Face Wash Hand Operated Stainless Steel

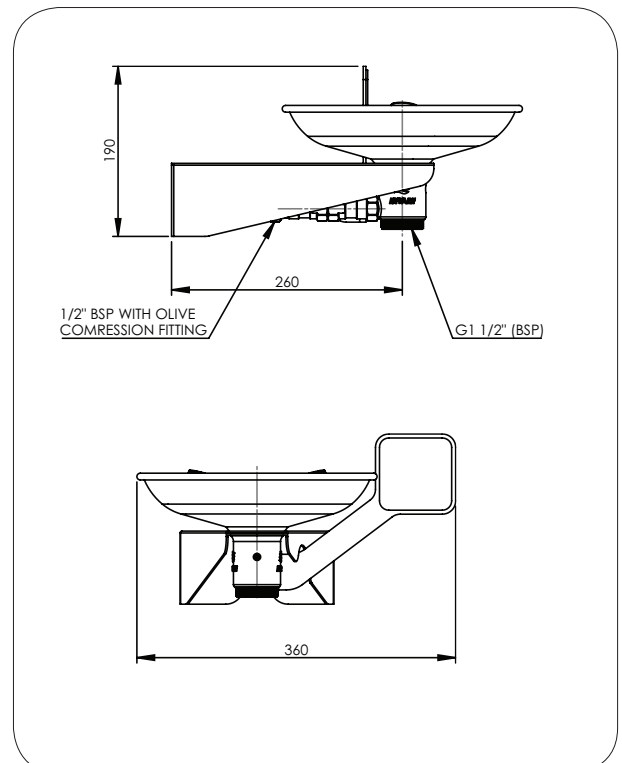


Technical Information

| | |
|--|---|
| Inlet Connection | 15 mm (1/2" BSP) with compression nut |
| Water Supply Line Size | Must be hydraulically sized to meet requirements. |
| Minimum Requirements to achieve ANSI Z358.1-2009 and AS/NZS 4775 2007 compliance | 210 kPa Caution should be taken when pressure exceeds 550 kPa (80 psi) Minimum Flow: 1.5 lpm (0.4 US gpm) |
| Enware Performance | At Working Pressure: 210 kPa (30 psi) Eyewash flow: 17lpm (4.5 US gpm) |
| Waste water outlet | G 1-1/2" BSP |

Installation of emergency showers, eye and eye/face wash equipment shall be in accordance with AS/NZS4775-2007 or ANSI Standard Z358.1 - whichever is applicable to the installation. Enware Australia advises:

- Due to ongoing Research and Development, specifications may change without notice.
- Component specifications may change on some export models.

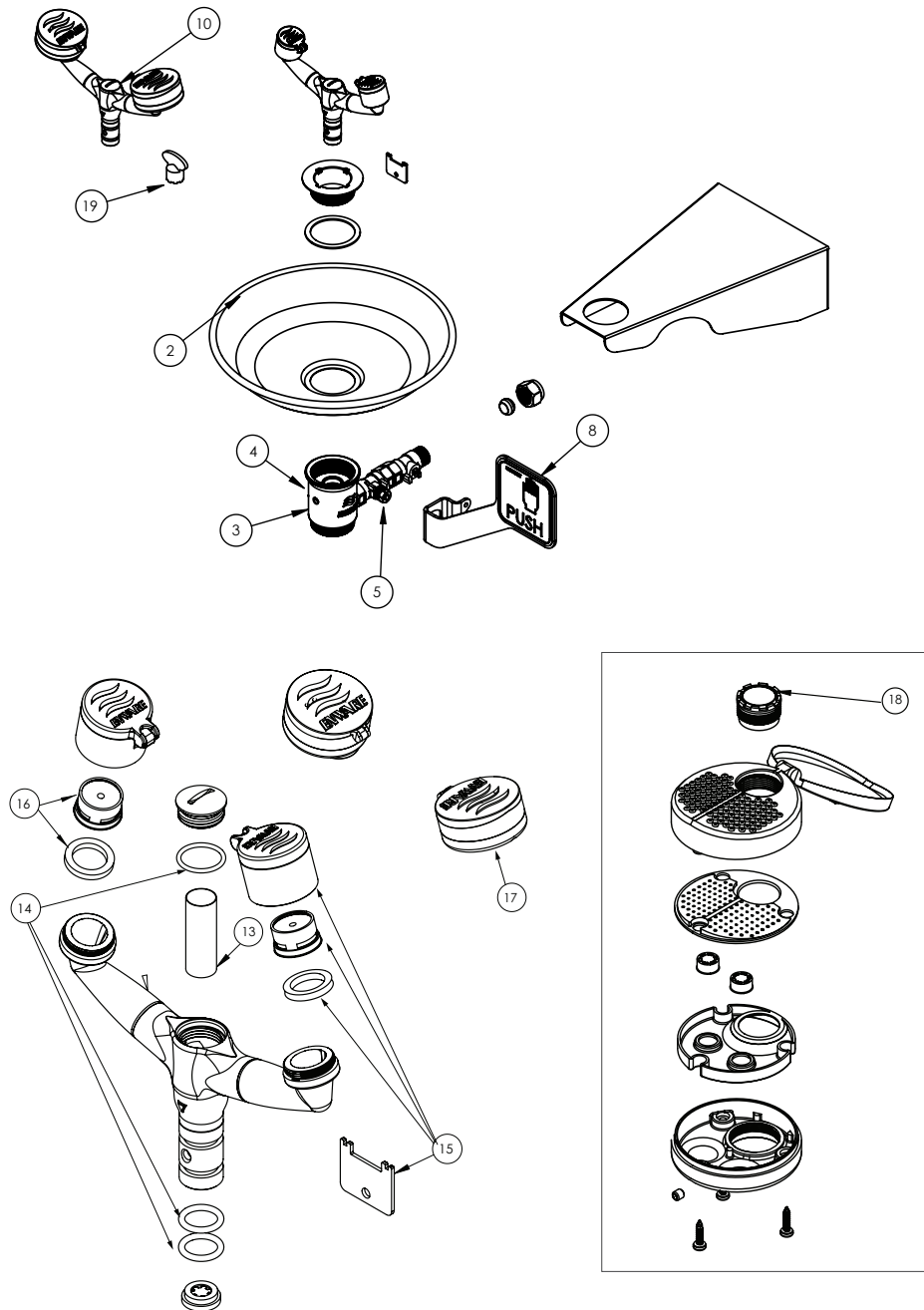


Version: May 18

Call 1300 369 273
www.enware.com.au

Enware Australia Pty Limited
9 Endeavour Rd Caringbah NSW 2229 Australia
Ph: 02 8536 4000 info@enware.com.au





| Item | Description | |
|------|---|---------|
| 2 | Bowl | ESPE008 |
| 3 | Eye Wash Waste With Inlet Control Valve | ESPE818 |
| 4 | Grub Screw M6 X 12Mm Waste Tee | ESPE814 |
| 5 | Ball Valve And Flow Control Assembly FF half inch SS one piece | ESP005 |
| 8 | Push Handle | ESPE813 |
| 10 | Eye/Face Wash Frame only | ESPE815 |
| | Inspection Tag | ESS521 |

| Item | Description | |
|------|--|---------|
| 13 | Mesh Filter 1/2" (40 Mesh) | ESPE811 |
| 14 | O-rings for Eye & Eye/Face Wash Tee Piece (2x Spigot O-rings, 1x Strainer Cap O-ring) | ESPE812 |
| 15 | Eye Wash Dustcover With Aerator (1 Pair) and key | ESPE016 |
| 16 | Aerator and Washer to Suit Eye Wash (1 each) | ESPE015 |
| 17 | Eye/Face Wash Outlet (each) | ESPE012 |
| 18 | Aerator to Suit Eye/Face Wash | ESPE013 |
| 19 | Aerator Key to Suit Eye/Face Wash Only | ESPE014 |

Version: May 18

Call 1300 369 273
www.enware.com.au

Enware Australia Pty Limited
 9 Endeavour Rd Caringbah NSW 2229 Australia
 Ph: 02 8536 4000 info@enware.com.au

